



# Service Manual

## Xtreme 3 (S/N starting with ND)

Portable Wireless Speaker with passive bass radiators, multiple PartyBoost-enabled speaker 15 hours of playing time and charging of other devices through USB, and IP67 waterproof & dustproof.

**SKU:**

JBLXTREME3BLKAM, JBLXTREME3BLUAM, JBLXTREME3CAMOAM, JBLXTREME3GRYAM, JBLXTREME3BLKEU, JBLXTREME3BLUEU, JBLXTREME3CAMOEU, JBLXTREME3GRYAM, BLXTREME3BLKAS, BLXTREME3BLUAS, JBLXTREME3CAMOAS, JBLXTREME3GRYAS, JBLXTREME3BLKCN, JBLXTREME3BLUCN, JBLXTREME3CAMOCN, JBLXTREME3GRYCN, JBLXTREME3BLKJN, JBLXTREME3BLUJN, JBLXTREME3CAMOJN, JBLXTREME3GRYJN, JBLXTREME3BLKRU, JBLXTREME3BLURU, JBLXTREME3CAMORU, JBLXTREME3GRYRU, JBLXTREME3BLKIN, JBLXTREME3BLUIN, JBLXTREME3CAMOIN, JBLXTREME3GRYIN, JBLXTREME3BLKBR, JBLXTREME3BLUBR, JBLXTREME3CAMOBR, JBLXTREME3GRYBR.



### CONTENTS

- 1. Safety Instruction, Warning & Notes.....2
- 2. Technical Specifications.....5
- 3. Software Upgrade Instruction.....6
- 4. Disassembly Instructions .....7
- 5. Side Bumper Assembly Instructions.....12
- 6. Block Diagram.....18
- 7. Wiring Diagram.....19
- 8. Circuit Diagrams & PCBA Layout.....20
- 9. Mechanical Exploded View.....43
- 10. Spare Parts List.....44
- 11. 3M Adhesion Promoter 111 Specifications.....46
- 12. Revision List.....51

# Important Safety Instructions

1. Read these instructions.
2. Keep these instructions.
3. Heed all warnings.
4. Follow all instructions.
5. Do not use this apparatus near water.
6. Clean only with a dry cloth.
7. Do not block any ventilation openings. Install in accordance with the manufacturer's instructions.
8. Do not install near any heat sources such as radiators, heat registers, stoves or other apparatus (including amplifiers) that produce heat.
9. Do not defeat the safety purpose of the polarized or grounding-type plug. A polarized plug has two blades with one wider than the other. A grounding-type plug has two blades and a third grounding prong. The wide blade or the third prong is provided for your safety. If the provided plug does not fit into your outlet, consult an electrician for replacement of the obsolete outlet.
10. Protect the power cord from being walked on or pinched, particularly at plugs, convenience receptacles and the point where they exit from the apparatus.
11. Only use attachments/accessories specified by the manufacturer.
12. Use only with the cart, stand, tripod, bracket or table specified by the manufacturer or sold with the apparatus. When a cart is used, use caution when moving the cart/apparatus combination to avoid injury from tip-over.
13. Unplug this apparatus during lightning storms or when unused for long periods of time.
14. Refer all servicing to qualified service personnel. Servicing is required when the apparatus has been damaged in any way, such as power supply cord or plug is damaged, liquid has been spilled or objects have fallen into the apparatus, or the apparatus has been exposed to rain or moisture, does not operate normally or has been dropped.
15. Do not expose this apparatus to dripping or splashing and ensure that no objects filled with liquids, such as vases, are placed on the apparatus.
16. To completely disconnect this apparatus from the AC Mains, disconnect the power supply cord plug from the AC receptacle.
17. The mains plug of the power supply cord shall remain readily operable.
18. Do not expose batteries to excessive heat such as sunshine, fire or the like.



## CAUTION

RISK OF ELECTRIC SHOCK. DO NOT OPEN.



THE LIGHTNING FLASH WITH AN ARROWHEAD SYMBOL, WITHIN AN EQUILATERAL TRIANGLE, IS INTENDED TO ALERT THE USER TO THE PRESENCE OF UNINSULATED "DANGEROUS VOLTAGE" WITHIN THE PRODUCT'S ENCLOSURE THAT MAY BE OF SUFFICIENT MAGNITUDE TO CONSTITUTE A RISK OF ELECTRIC SHOCK TO PERSONS.



THE EXCLAMATION POINT WITHIN AN EQUILATERAL TRIANGLE IS INTENDED TO ALERT THE USER TO THE PRESENCE OF IMPORTANT OPERATING AND MAINTENANCE (SERVICING) INSTRUCTIONS IN THE LITERATURE ACCOMPANYING THE PRODUCT.

WARNING: TO REDUCE THE RISK OF FIRE OR ELECTRIC SHOCK, DO NOT EXPOSE THIS APPARATUS TO RAIN OR MOISTURE.

## For Products That Transmit and Receive RF Energy:

### FCC Regulations (USA Only)

#### FCC Information For Users

This device complies with Part 15 of the FCC Rules. Operation is subject to the following two conditions: (1) This device may not cause harmful interference; and (2) this device must accept any interference received, including interference that may cause undesired operation.

#### Radio and Television Interference

This equipment has been tested and found to comply with the limits for a Class B digital device, pursuant to Part 15 of the FCC Rules. These limits are designed to provide reasonable protection against harmful interference in a residential installation. This equipment generates, uses and can radiate radio frequency energy and, if not installed and used in accordance with the instructions, may cause harmful interference to radio communications. However, there is no guarantee that interference will not occur in a particular installation. If this equipment does cause interference to radio or television reception, which can be determined by turning the equipment off and then on, the user is encouraged to try to correct the interference by one or more of the following measures:

- Increase the separation between the equipment and receiver.
- Connect the equipment to a different outlet so that the equipment and receiver are on different branch circuits.
- Consult the dealer or an experienced radio/TV technician for help.

**NOTE:** Changes or modifications not expressly approved by Harman could void the user's authority to operate the equipment.

### IC Statement and Warning (Canada Only)

This Class B digital apparatus complies with Canadian ICES-003. Cet appareil numérique de la classe B est conforme à la norme NMB-003 du Canada.

### For Canadian Model

This Class B digital apparatus complies with Canadian ICES-003.

### Modèle pour les Canadiens

Cet appareil numérique de la classe B est conforme à la norme NMB-003 du Canada.

## For Products with Radio Receivers That Can Use an External Antenna:

### CATV or Antenna Grounding

If an outside antenna or cable system is connected to this product, be certain that it is grounded so as to provide some protection against voltage surges and static charges. Section 810 of the National Electrical Code, ANSI/NFPA No. 70-1984, provides information with respect to proper grounding of the mast and supporting structure, grounding of the lead-in wire to an antenna discharge unit, size of grounding conductors, location of antenna discharge unit, connection to grounding electrodes and requirements of the grounding electrode.

### Note to CATV System Installer:

This reminder is provided to call the CATV (cable TV) system installer's attention to article 820-40 of the NEC, which provides guidelines for proper grounding and, in particular, specifies that the cable ground shall be connected to the grounding system of the building, as close to the point of cable entry as possible.

### For CD/DVD/Blu-ray Disc™ Players:

CLASS 1 LASER PRODUCT  
KLASSE 1 LASER PRODUKT  
LUOKAN 1 LASER LAITE  
KLASS 1 LASER APPARAT  
CLASSE 1 PRODUIT LASER

### Caution:

This product uses a laser system. To prevent direct exposure to the laser beam, do not open the cabinet enclosure or defeat any of the safety mechanisms provided for your protection. DO NOT STARE INTO THE LASER BEAM. To ensure proper use of this product, please read the owner's manual carefully and retain it for future use. Should the unit require maintenance or repair, please contact your local Harman Kardon service center. Refer servicing to qualified personnel only.

## For Products That Include Batteries:



### Instructions for Users on Removal and Disposal of Used Batteries.

#### CAUTION

**Risk of explosion if battery is incorrectly replaced. Replace only with the same or equivalent type.**

Alkaline batteries are considered nonhazardous. Rechargeable batteries (i.e., nickel cadmium, nickel metal-hydride, lithium and lithium-ion) are considered hazardous household materials and may pose an unnecessary health and safety risk.

In the European Union and other locations, it is illegal to dispose of any battery with household trash. All batteries must be disposed of in an environmentally sound manner. Contact your local waste management officials for information regarding the environmentally sound collection, recycling and disposal of used batteries.

To remove the batteries from your equipment or remote control, reverse the procedure described for inserting batteries in the owner's manual.

For products with a built-in battery that lasts for the lifetime of the product, removal may not be possible for the user. In this case, recycling or recovery centers handle the dismantling of the product and the removal of the battery. If, for any reason, it becomes necessary to replace such a battery, this procedure must be performed by authorized service centers.

# ELECTROSTATICALLY SENSITIVE (ES) DEVICES

Some semiconductor (solid state) devices can be damaged easily by static electricity. Such components commonly are called Electrostatically Sensitive (ES) Devices. Examples of typical ES devices are integrated circuits and some field effect transistors and semiconductor "chip" components.

The following techniques should be used to help reduce the incidence of component damage caused by static electricity.



1. Immediately before handling any semiconductor component or semiconductor-equipped assembly, drain off any electrostatic charge on your body by touching a known earth ground. Alternatively, obtain and wear a commercially available discharging wrist strap device, which should be removed for potential shock reasons prior to applying power to the unit under test.
2. After removing an electrical assembly equipped with ES devices, place the assembly on a conductive surface such as aluminum foil, to prevent electrostatic charge build-up or exposure of the assembly.
3. Use only a grounded-tip soldering iron to solder or unsolder ES devices.
4. Use only an anti-static solder removal device. Some solder removal devices not classified as "anti-static" can generate electrical charges sufficient to damage ES devices.
5. Do not use freon-propelled chemicals. These can generate electrical charge sufficient to damage ES devices.
6. Do not remove a replacement ES device from its protective package until immediately before you are ready to install it. (Most replacement ES devices are packaged with leads electrically shorted together by conductive foam, aluminum foil or comparable conductive material.)
7. Immediately before removing the protective material from the leads of a replacement ES device, touch the protective material to the chassis or circuit assembly into which the device will be installed.

**CAUTION** : Be sure no power is applied to the chassis or circuit, and observe all other safety precautions.

8. Minimize bodily motions when handling unpackaged replacement ES devices. (Otherwise harmless motion such as the brushing together of your clothes fabric or the lifting of your foot from a carpeted floor can generate static electricity sufficient to damage an ES devices.

## PRODUCT SAFETY NOTICE

Each precaution in this manual should be followed during servicing.

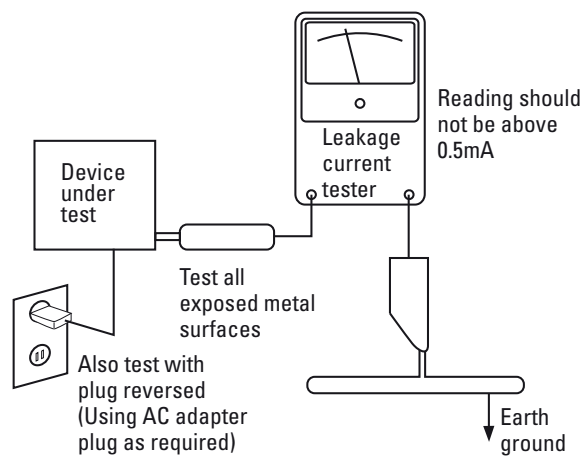
Components identified with the IEC symbol  in the parts list are of special significance to safety. When replacing a component identified with , use only the replacement parts designated, or parts with the same ratings or resistance, wattage, or voltage that are designated in the parts list in this manual. Leakage-current or resistance measurements must be made to determine that exposed parts are acceptably insulated from the supply circuit before returning the product to the customer.

## SAFETY PRECAUTIONS

The following check should be performed for the continued protection of the customer and service technician.

### LEAKAGE CURRENT CHECK

Measure leakage current to a known earth ground (water pipe, conduit, etc.) by connecting a leakage current tester between the earth ground and all exposed metal parts of the appliance (input/output terminals, screwheads, metal overlays, control shaft, etc.). Plug the AC line cord of the appliance directly into a 120V AC 60Hz outlet and turn the AC power switch on. Any current measured must not exceed 0.5mA.



### AC Leakage Test

**ANY MEASUREMENTS NOT WITHIN THE LIMITS OUTLINED ABOVE ARE INDICATIVE OF A POTENTIAL SHOCK HAZARD AND MUST BE CORRECTED BEFORE RETURNING THE APPLIANCE TO THE CUSTOMER.**

# Technical Specifications

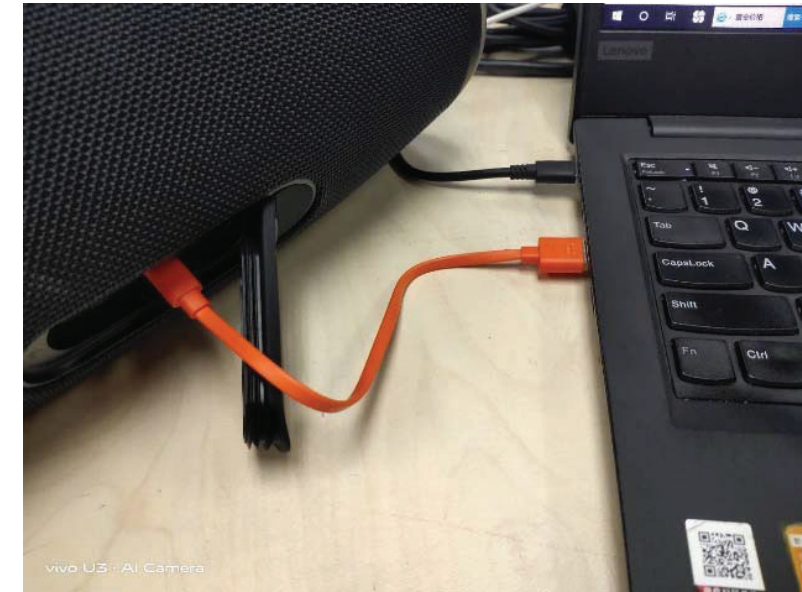
Model Name	JBL Xtreme 3
Bluetooth version:	5.1
Support:	A2DP V1.3, AVRCP V1.6
Transducer:	2x2.75" woofer+2x20mm dome tweeter
Output power:	4X25W (AC mode), 4X15W (Battery mode)
Frequency response:	AUX: 20Hz to 20KHz (EQ setting is disable) BT: 20Hz to 19KHz (EQ setting is disable)
Signal-to-noise ratio:	>80 dB
Power Supply:	20V/3A
Battery type:	Lithium-ion polymer(36.3Wh)
Battery charge time:	< 4.5H
Music playing time:	Up to 15 hours
Bluetooth transmitter power:	≤8 dBm
Bluetooth transmitter frequency range:	2.402 – 2.480 GHz
Bluetooth transmitter modulation:	GFSK, $\pi/4$ -DQPSK, 8DPSK
Dimension (W x D x H):	297.8 mm X 134 mm x 137 mm
Weight:	1.939KG

# Software upgrade Instruction

1. Press BT, VOL+ and POWER to enter DFU mode, the power light is flashing.

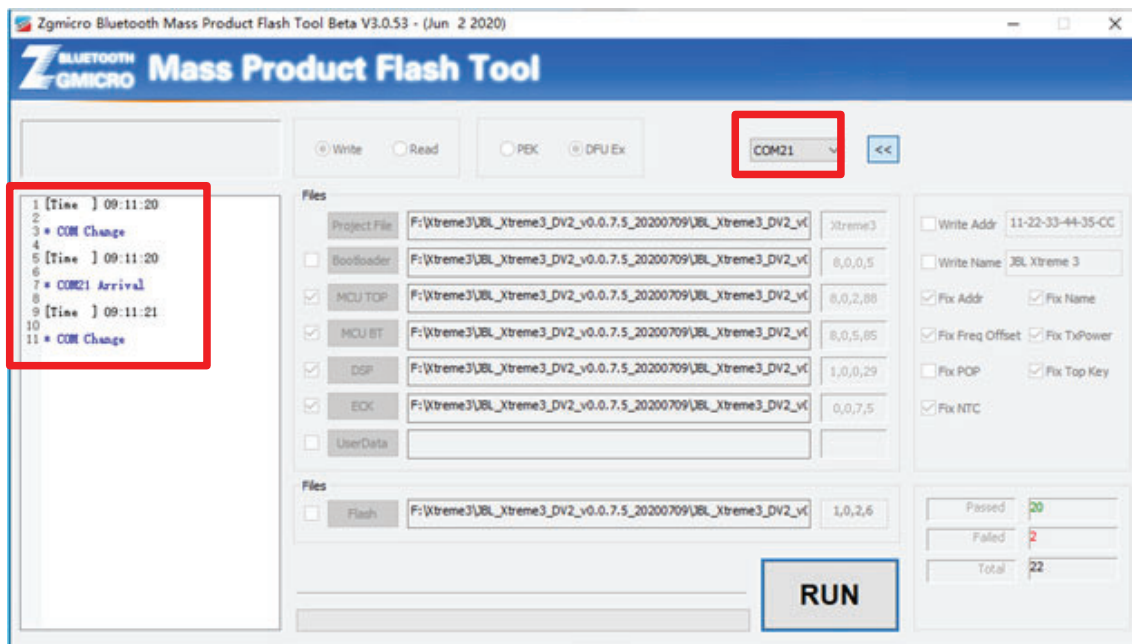


2. Connect the computer with the USB cable.



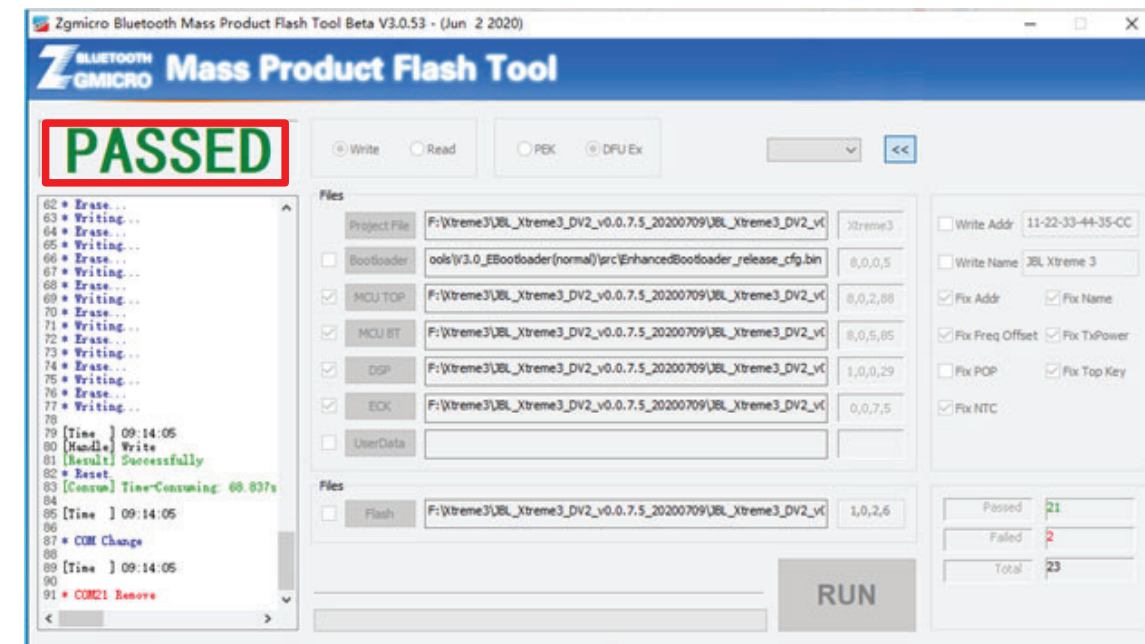
3. Open the folder mpflash tools 3.0 mpflash tools 3.0.exe.

computer recognition COM port, click "RUN", start upgrade.



4. Click "RUN" to begin the upgrade until the display "PASSED".

Wait for the machine to restart automatically, then unplug the USB cable, upgrade successfully.



# Tool list and pictures reference pictures

number	name	remark
1	Small Screwdrivers Blades	2
2	Middle Screwdrivers Blades	3
3	Large Screwdrivers Blades	4
4	Become Warped Blade	Flat Tip Screwdrivers
5	Right Anger Electric Screwdriver	KILEWS
6	Bend Electric Screwdriver	



# Disassembly instruction (main unit)

1. Use a pry knife to pry the joint line of the front and back speaker grille.



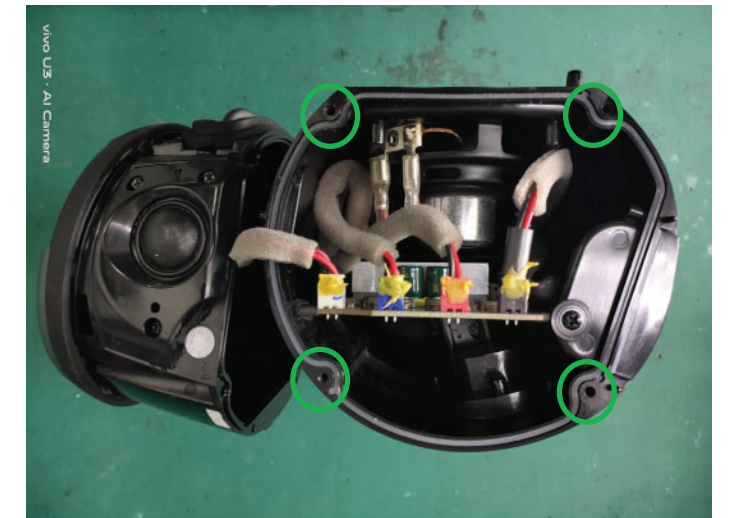
2. Use your hands to open the back speaker grille.



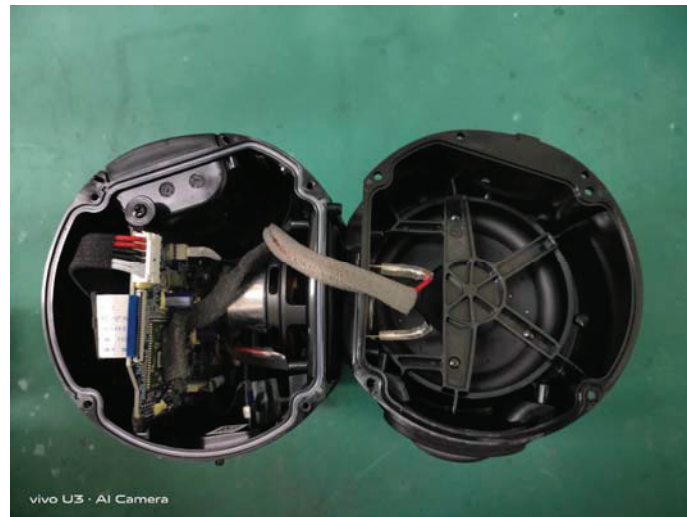
3. Loosen 2 screws, remove the all speaker cloth.



4. Loosen 4 screws, remove the house on the left.



5. Loosen 4 screws, remove the house on the right.



6. Loosen 3 screws, remove the left tweeter.

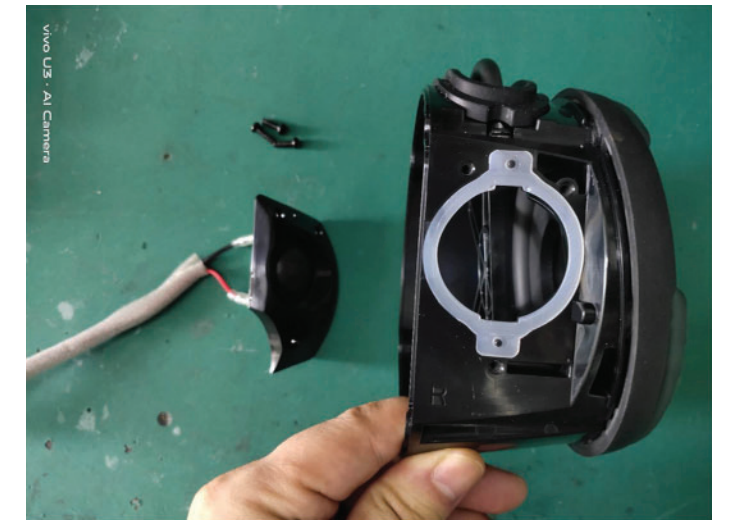




7. Loosen 2 screws, remove the left hook bridge hook cover.



8. Loosen 3 screws, remove the right tweeter.



9. Loosen 2 screws, remove the right hook bridge hook cover.



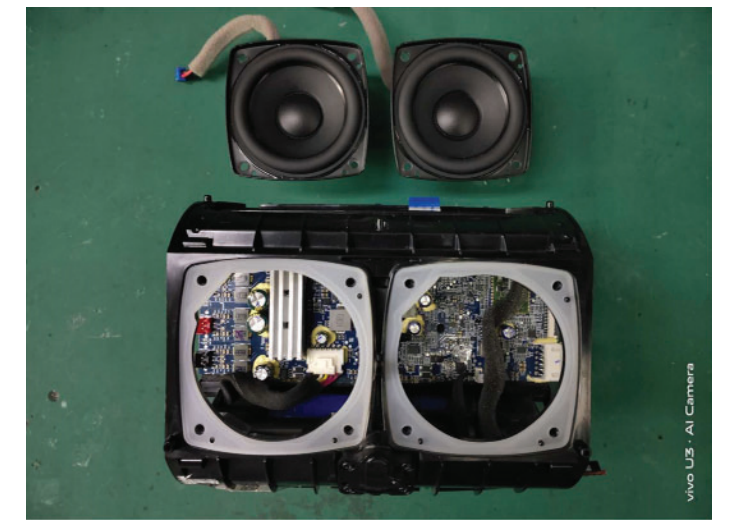
10. Use a pry knife to pry and open the silicone buttons.



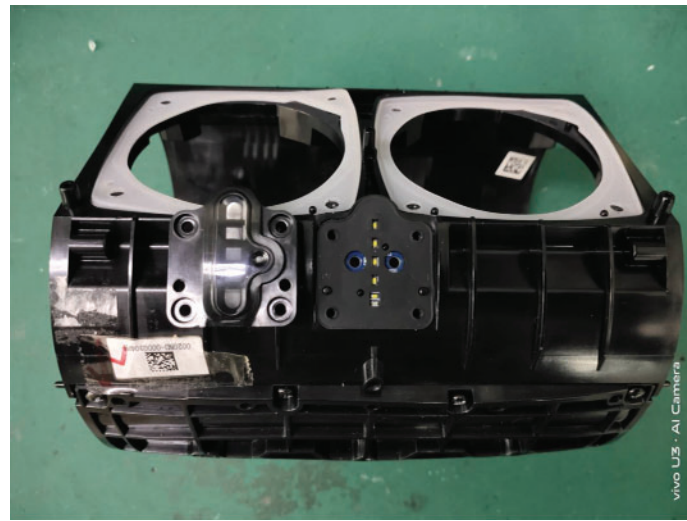
11. Use a pry knife to pry and open the buttons board.



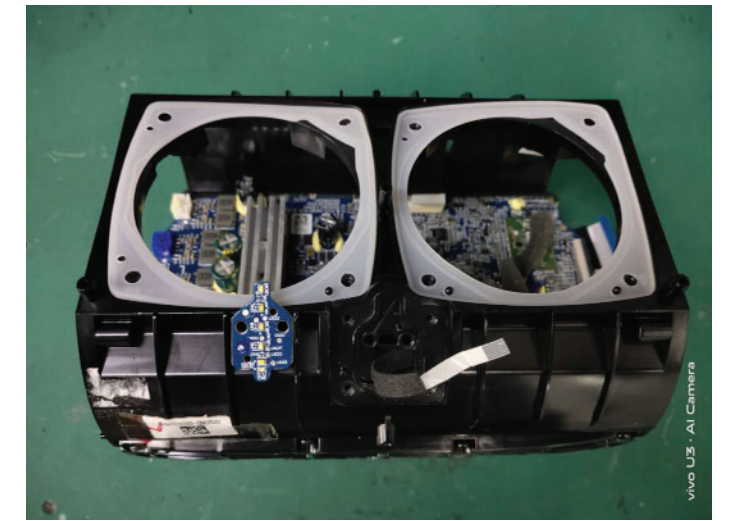
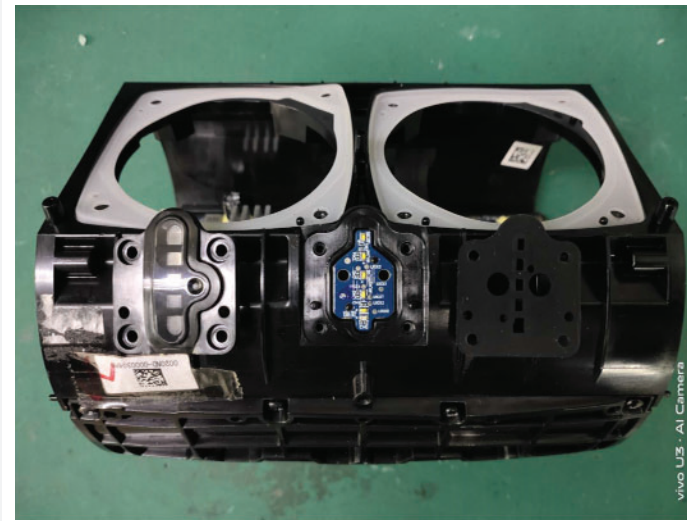
12. Loosen 8 screws, remove the 2 woofers.



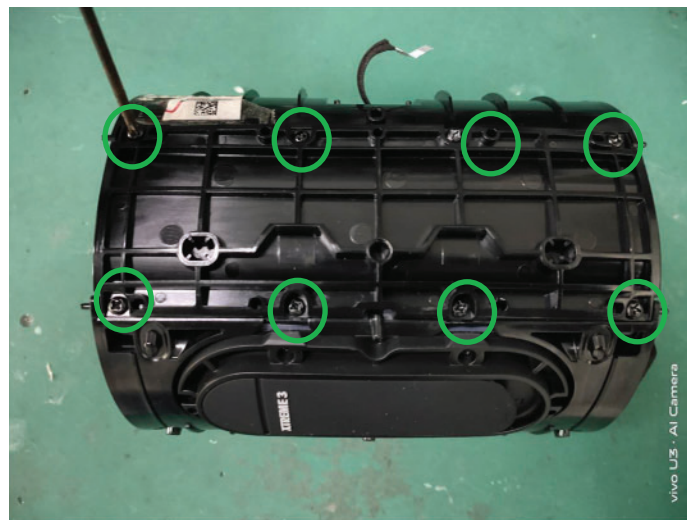
13. Loosen 4 screws, remove the power lamp cover and Power LED board.



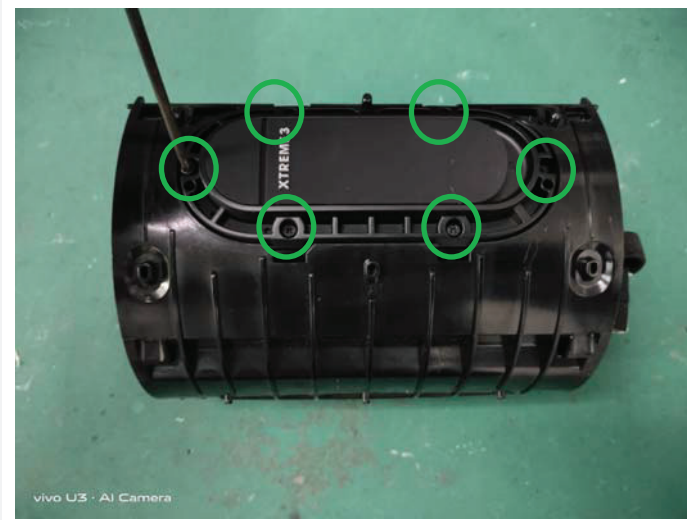
14. Remove the rubber pad and Power LED board.



15. Loosen 8 screws, remove the battery cover and battery.



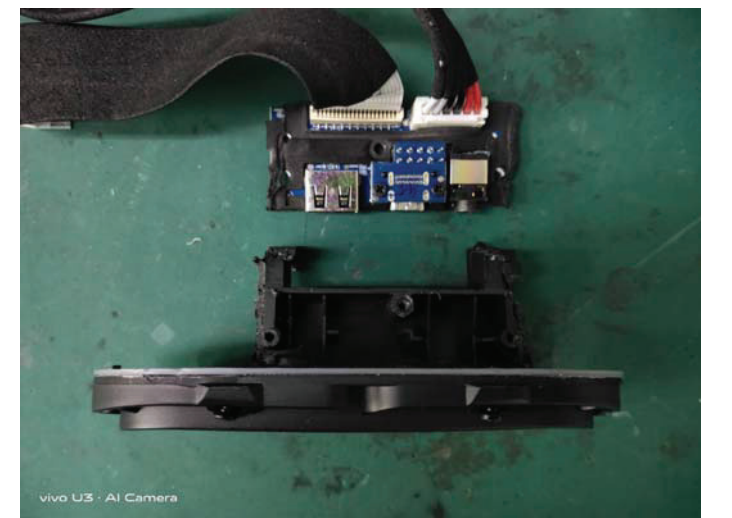
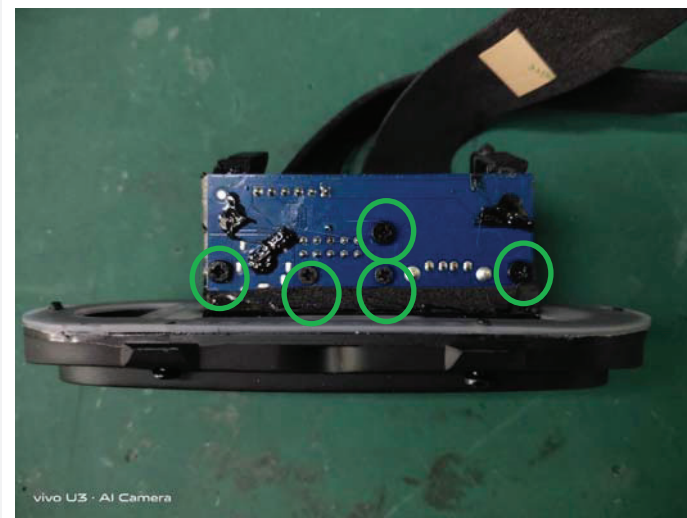
16. Loosen 6 screws, remove the I/O stents and jack board.



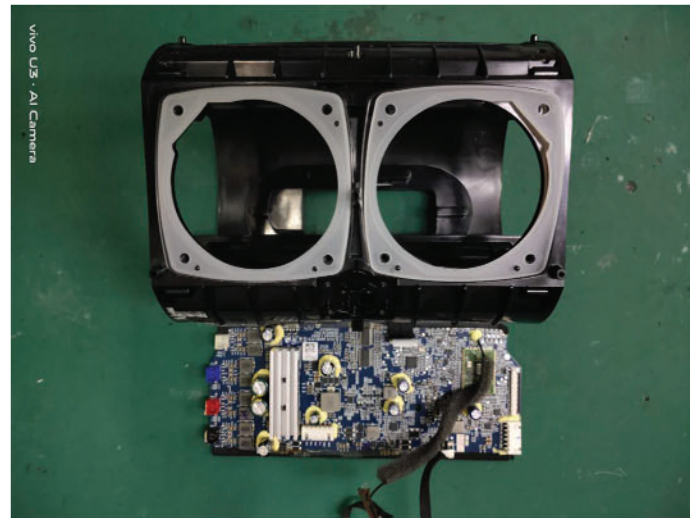
17. Pull out the the I/O cover by hand.



18. Loosen 5 screws, remove the jack board



19. Loosen 2 screws at both ends, remove the main board.



Connect the left tweeter

Connect the left woofer

Connect the right woofer

Connect the right woofer

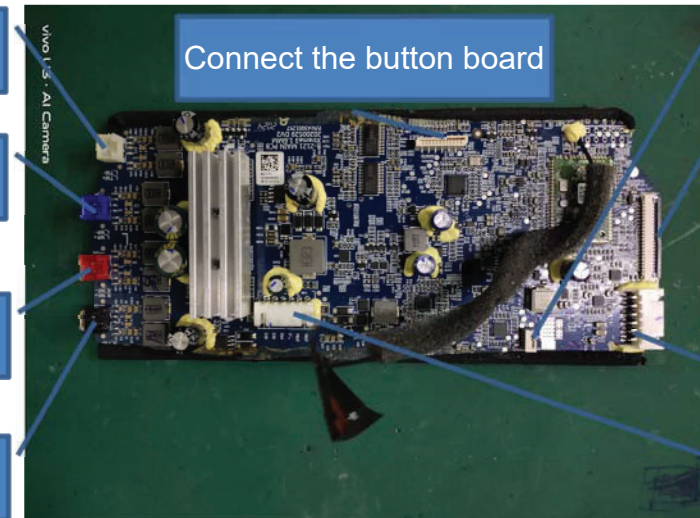
Connect the button board

Connect the light board

Connect the jack board

Connect the jack board

Connect the battery

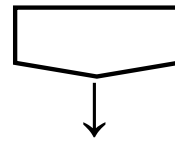


# **JBL Xtreme 3 Side Bumper (Rubber Foot) Assembly Instructions**



# Operating flow chart

---



Clean contact surfaces between side bumper & grooves on Passive Radiator with alcohol and then wipe the treating agent – 3M Adhesion Promoter 111 onto the contact surfaces.



Paste the side bumper(rubber foot) on double-sided tape



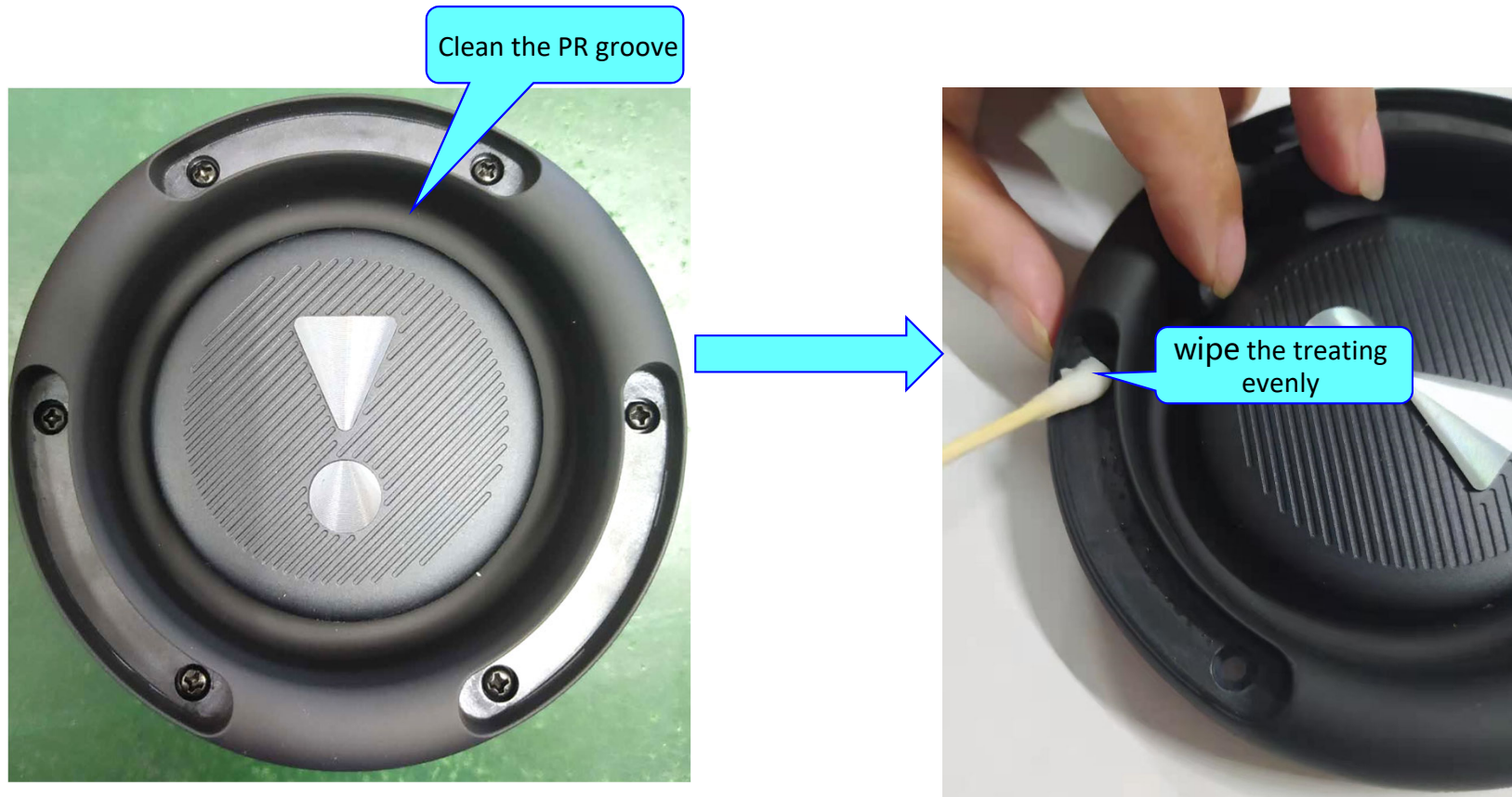
Put the side bumper(rubber foot) with tape in the groove on passive radiator



Apply pressure to promote bonding

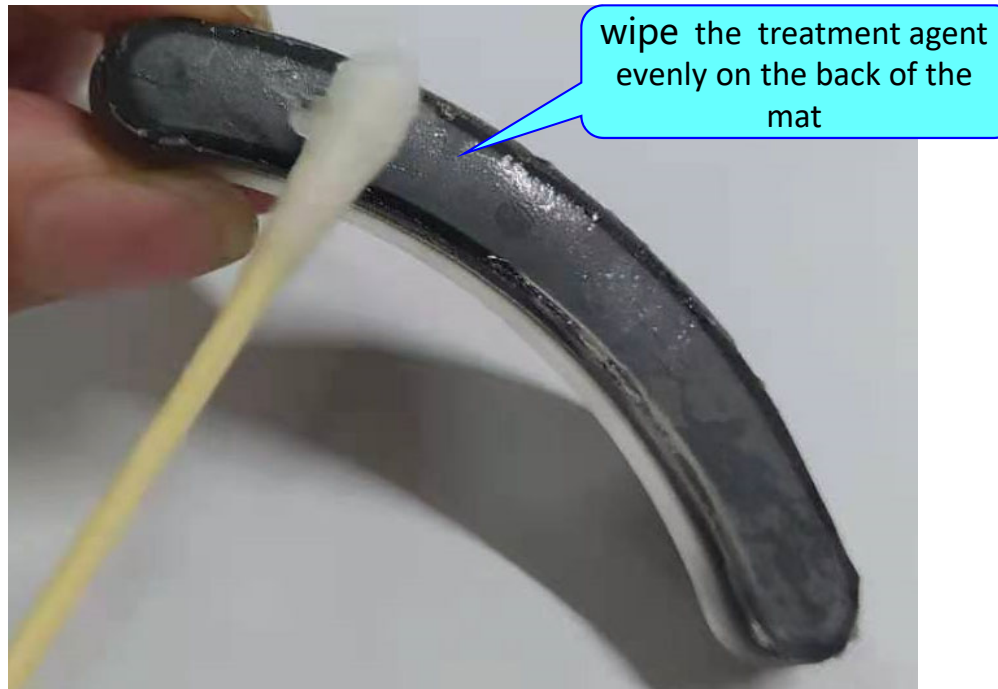


# 1. Clean and wipe the treatment agent over the PR groove



- Clean the PR groove and wipe the treating agent over the groove evenly, then put the PR to the designated place to dry after the primer is finished (the drying time is about 5-10 minutes). Use it within 24 hours after drying (do not contact any other impurities during the drying).

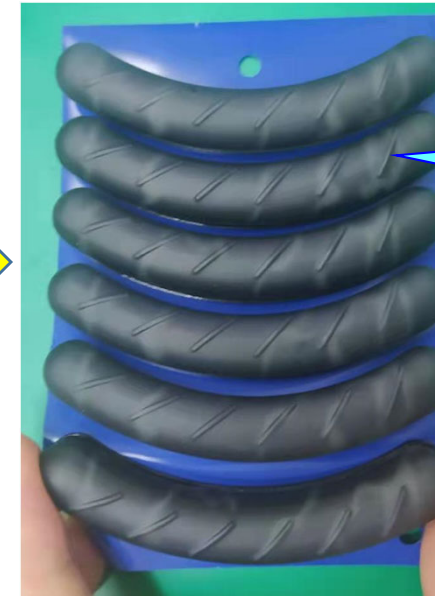
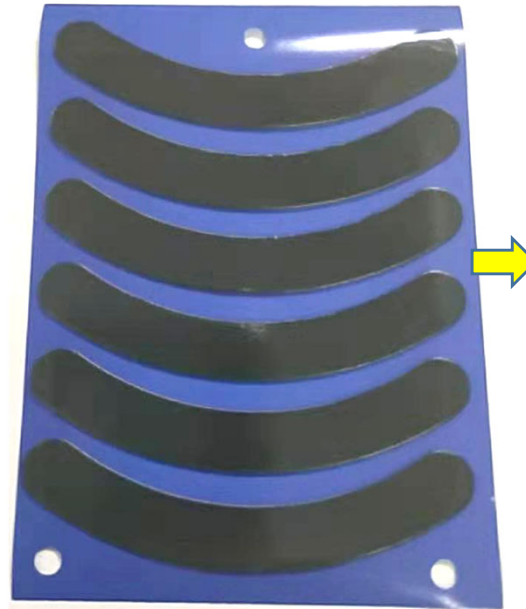
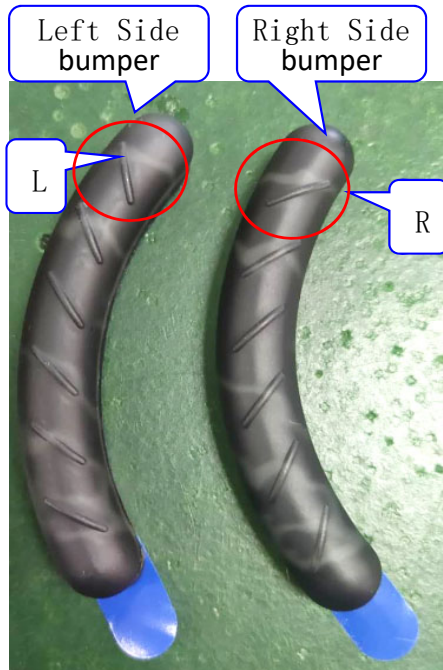
## 2. Wipe surface treatment agent to side bumper



- Rub the adhesive surface treatment agent onto the back of the mat evenly then put it in the designated place to dry (the drying time is about 5-10 minutes). Use it within 24 hours after drying (do not contact any other impurities during the drying).

### 3. Paste the side bumper on double-sided tape

Remark: side bumpers should be marked clearly and cannot be mixed during operation



- Paste side bumper on double-sided tape, pressure force  $\geq 200\text{kPa}$ , pressure time  $\geq 15$  seconds, and pay attention to the left/right distinction. After the film is removed, there can not have fingerprint or dust on the adhesive surface, so as not to affect the final bonding strength.



## 4. Place the side bumper in the PR groove

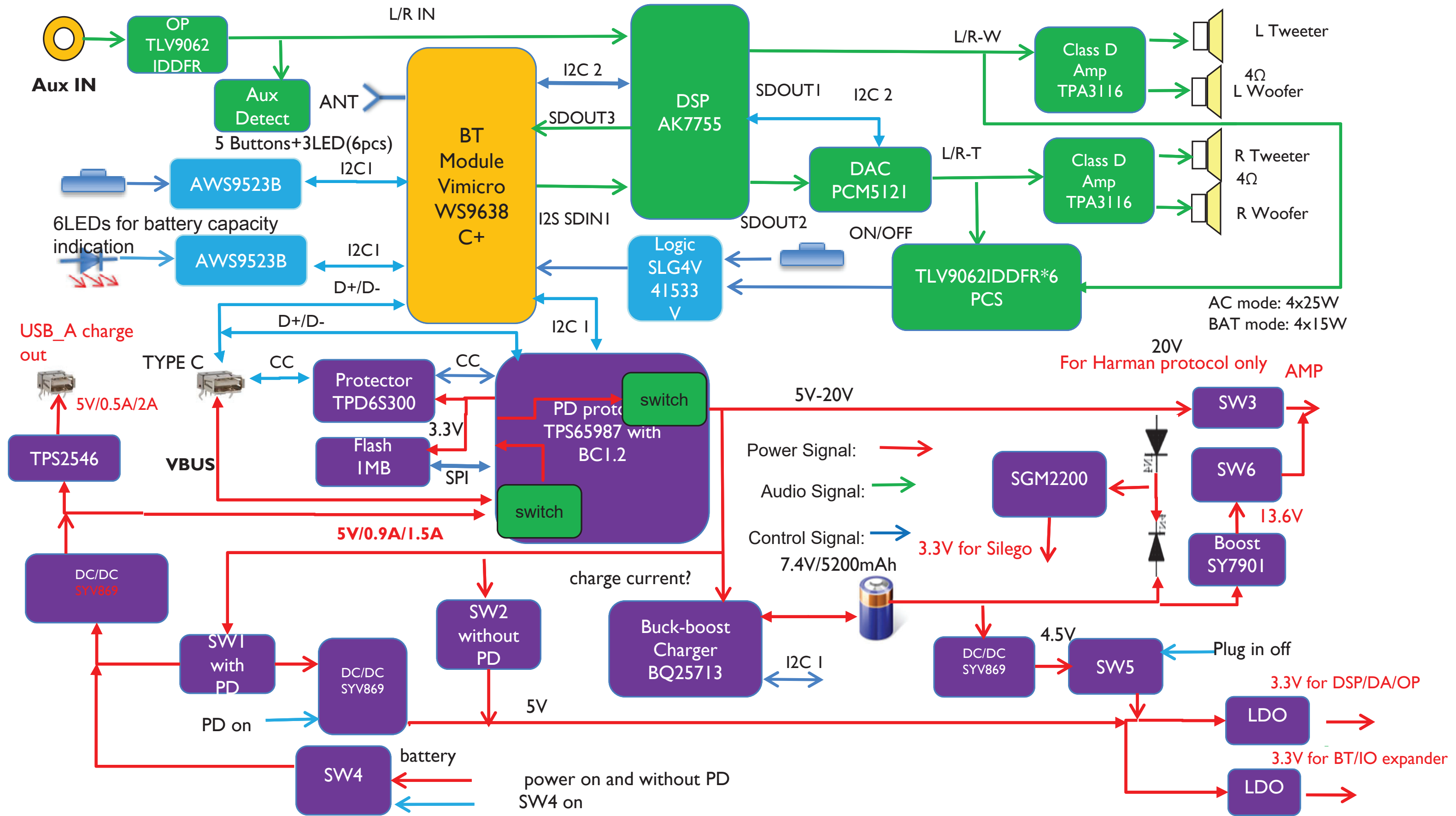
Oven Temperature: 60°C-70°C.  
Time: 5~10min



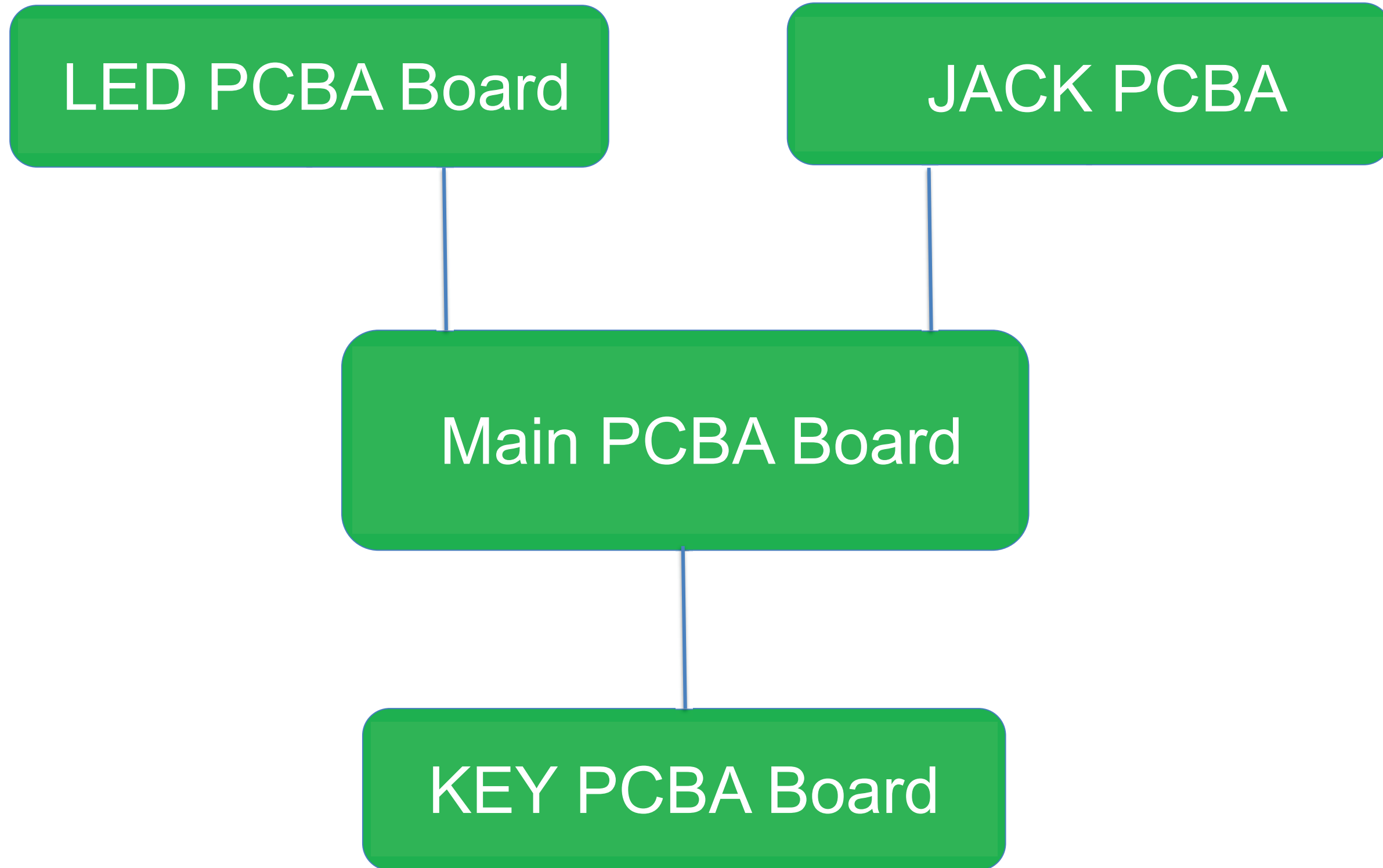
Paste and press  
:pressure force  $\geq 200\text{kPa}$ , pressure time  $\geq 20$   
seconds

- If the operating ambient temperature is  $\leq 15^\circ\text{C}$ , operator must put the side bumpers with the double-sided tape into oven for 5~10 minutes at 60~70 °C before attaching in the PR grooves.
- The side bumper with double-sided tape must be placed in the PR groove less than 5 seconds after tearing off the film, (Attention : double-sided tape does not contact other non-adhesive objects), and then apply pressure force  $\geq 200\text{kPa}$ , pressure time  $\geq 20$  seconds on each side bumper surface (fix and press the ends first, then the middle position).

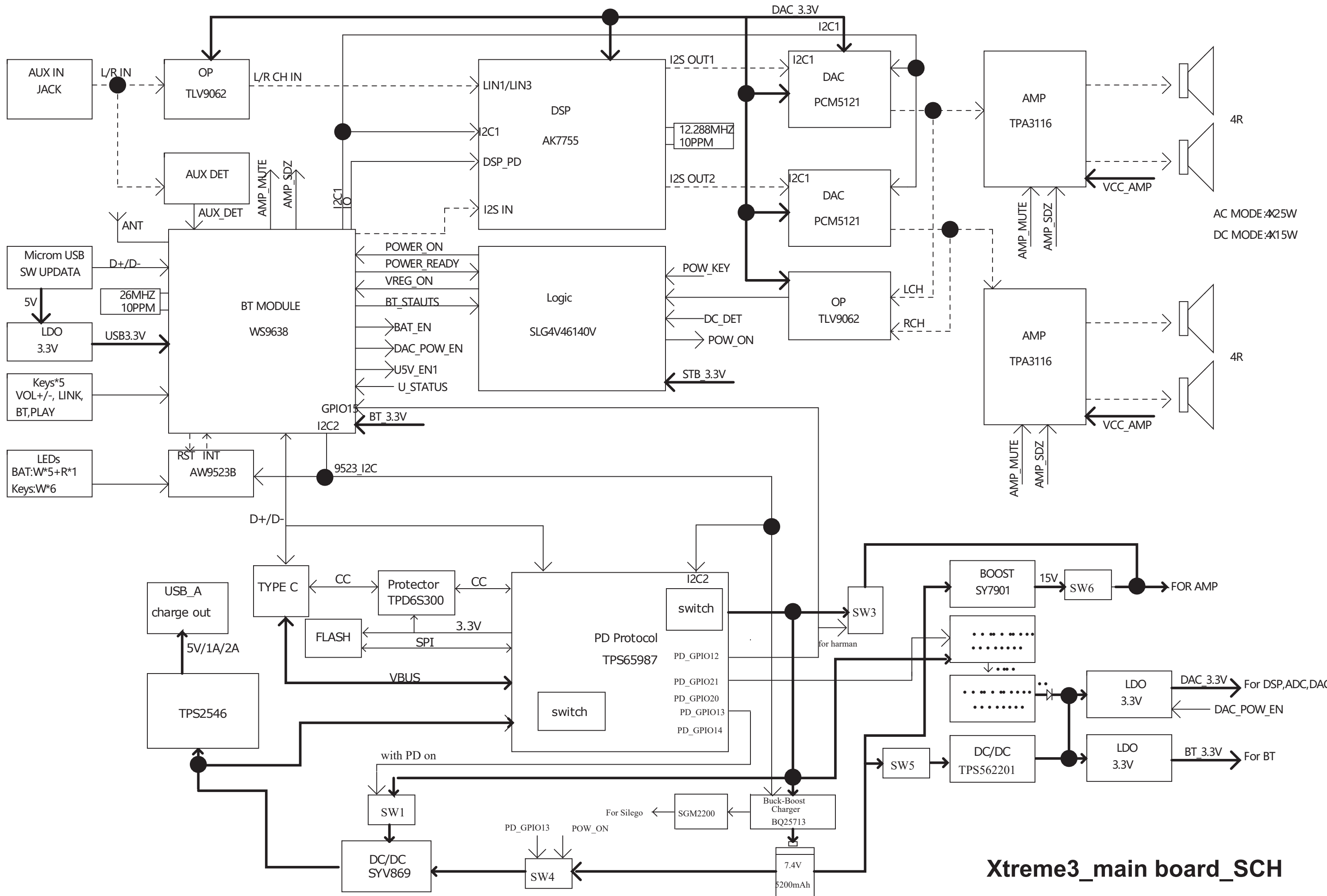
# BLOCK DIAGRAM



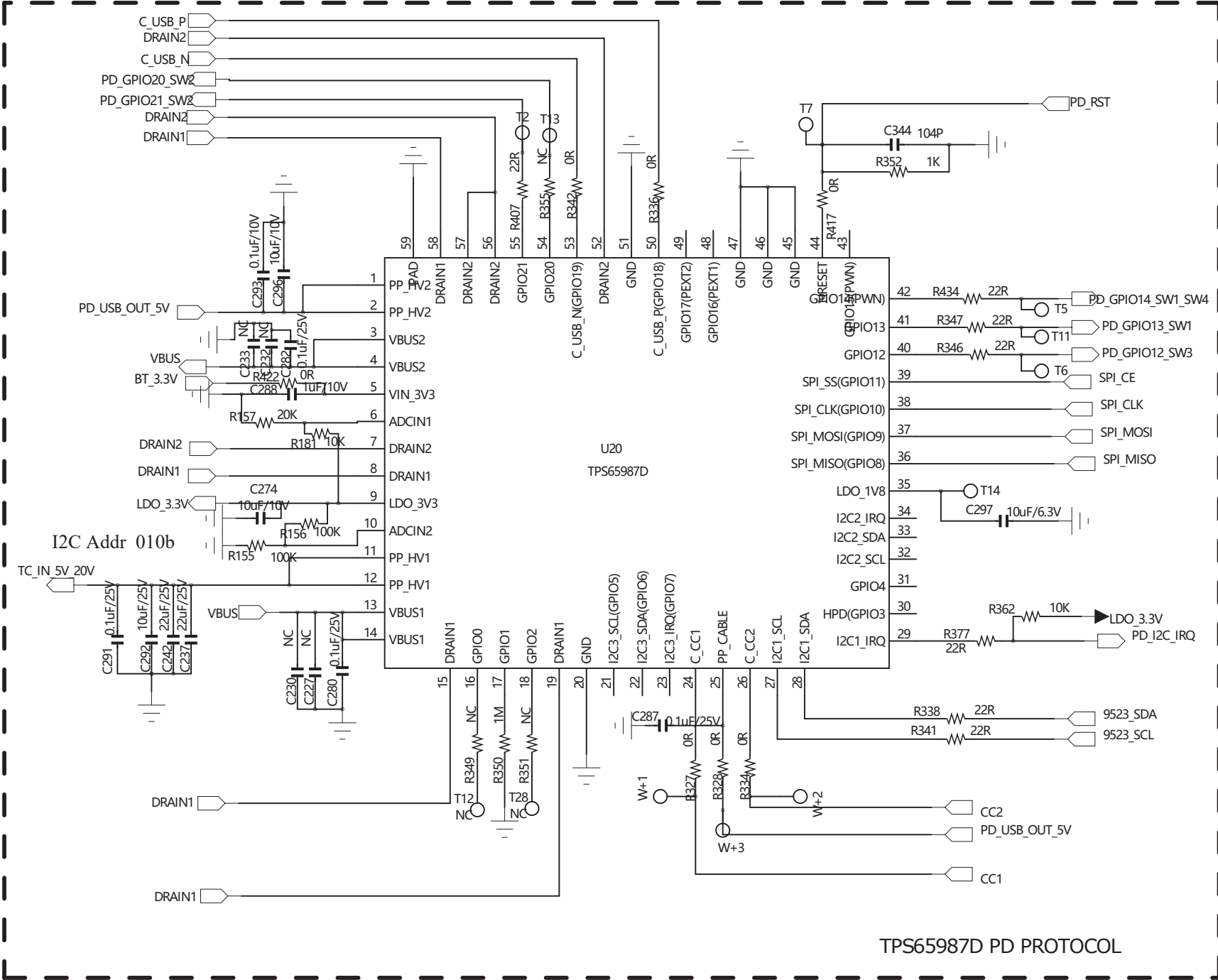
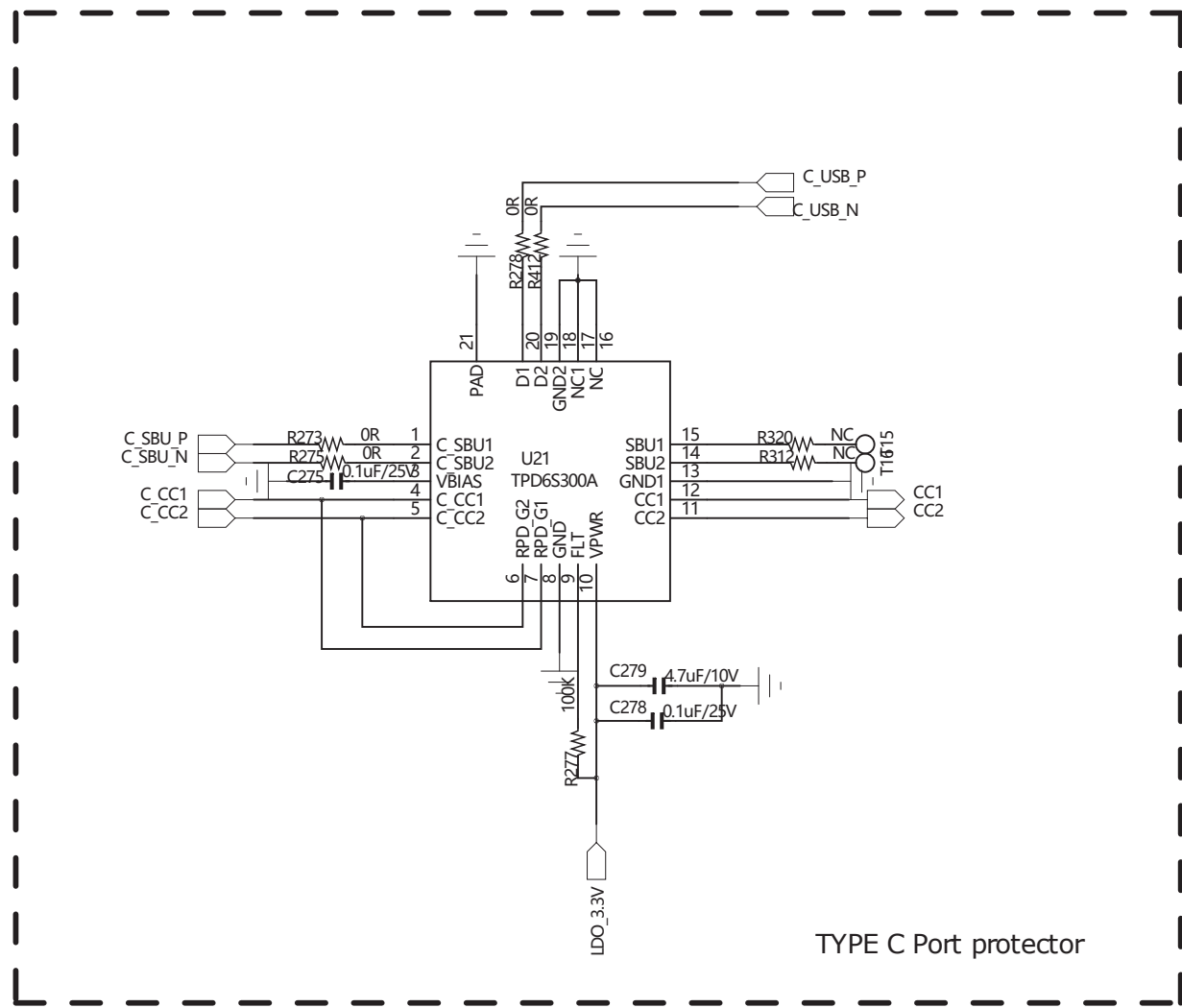
## WIRING DIAGRAM

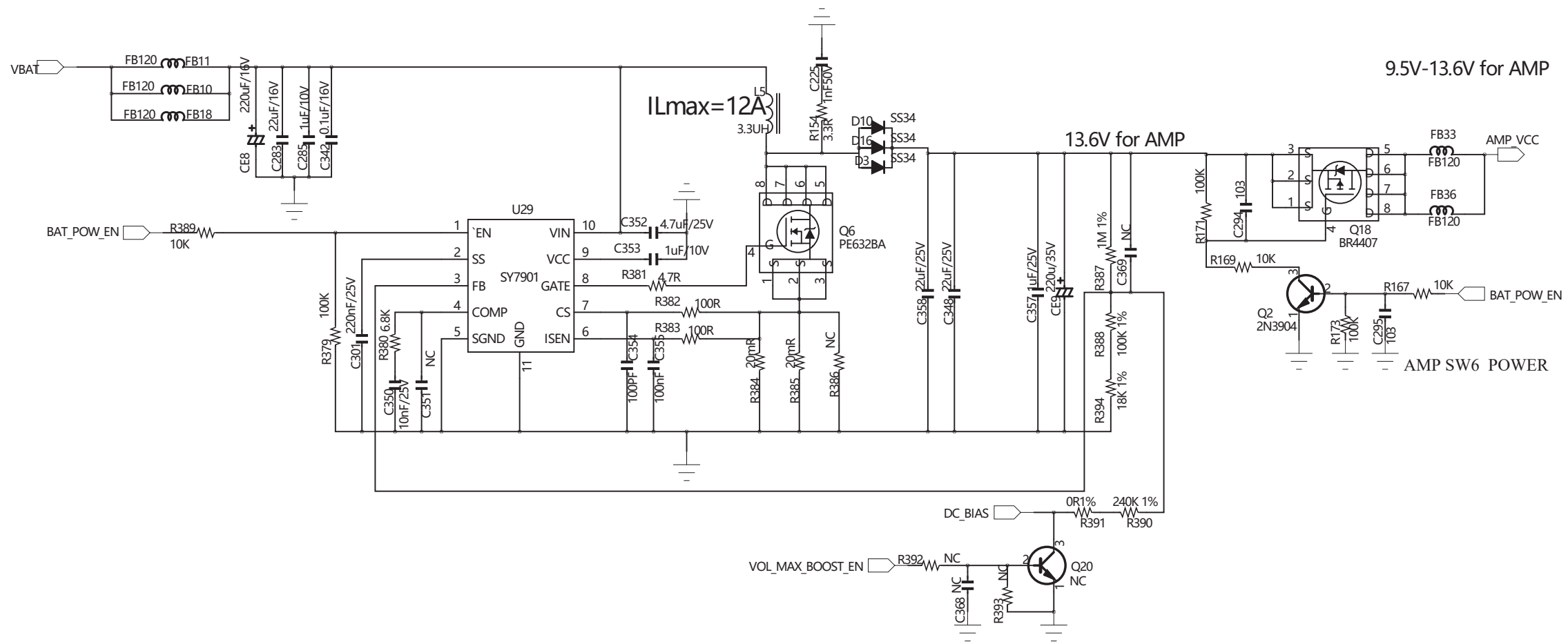
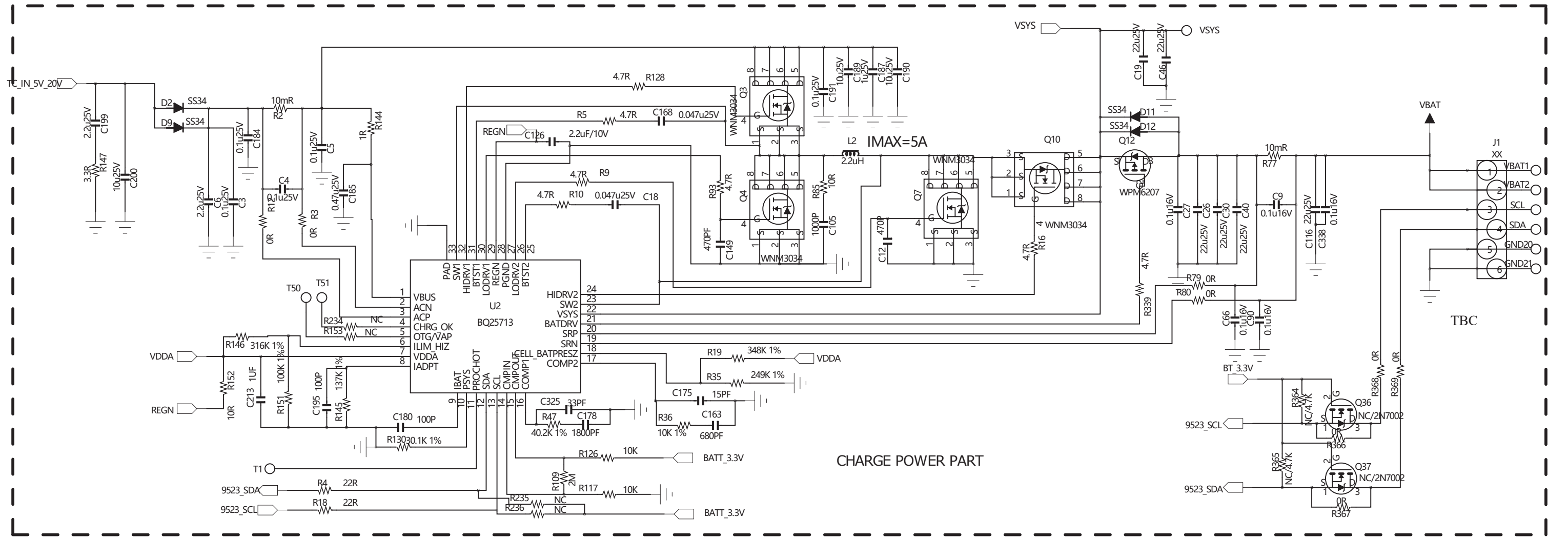


# Xtreme3\_main board\_SCH

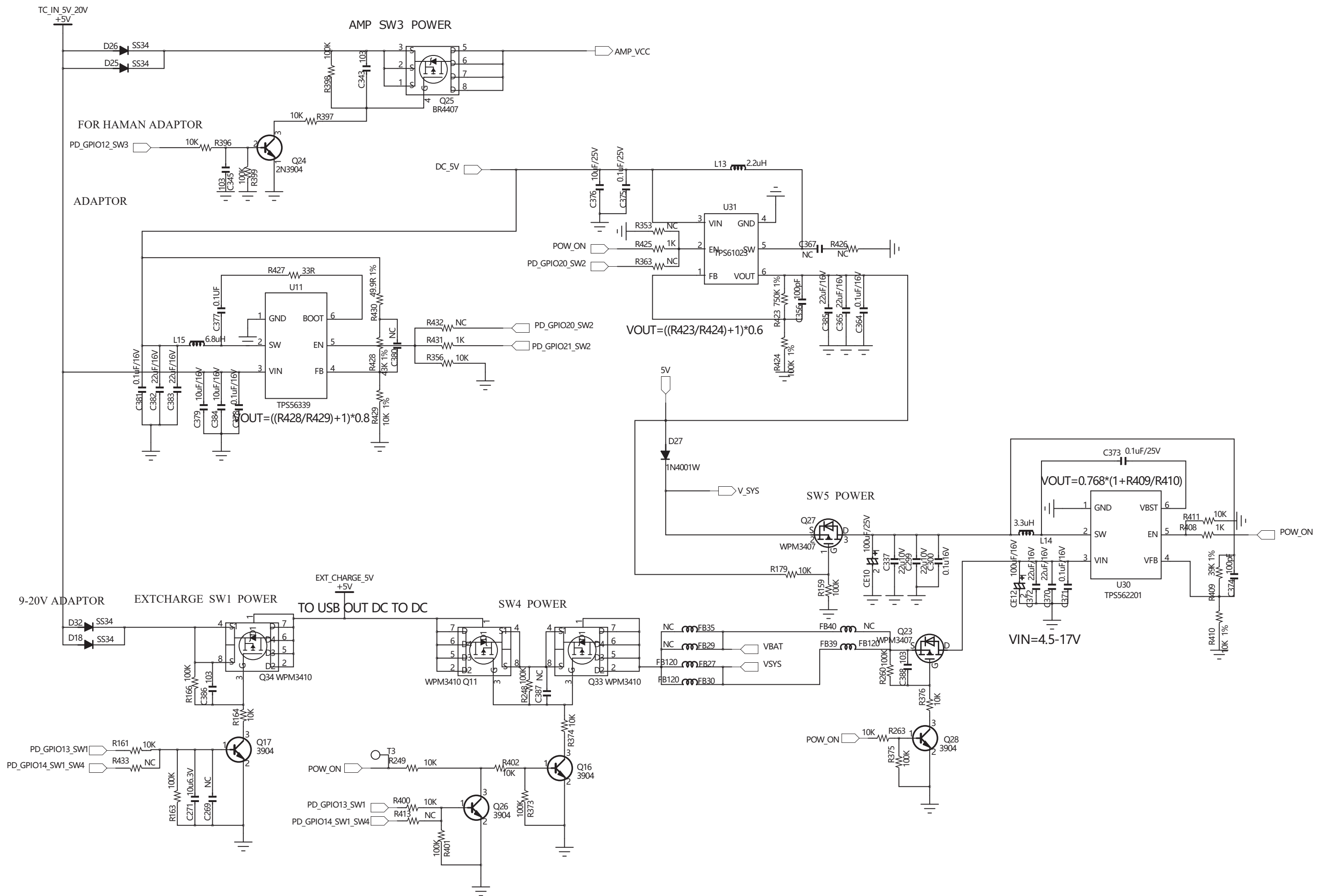


Xtreme3\_main board\_SCH





Xtreme3\_main board\_SCH

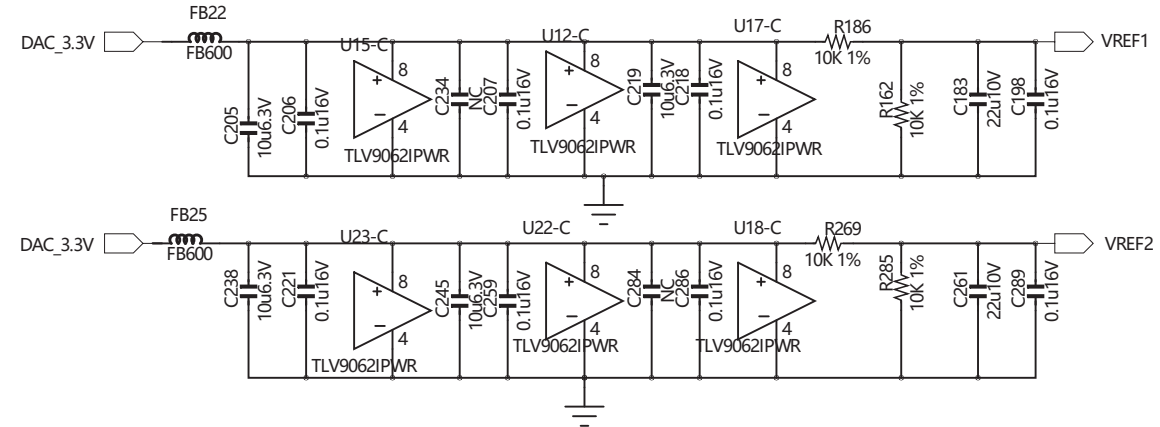
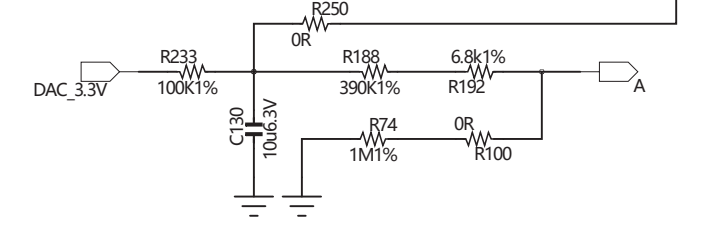
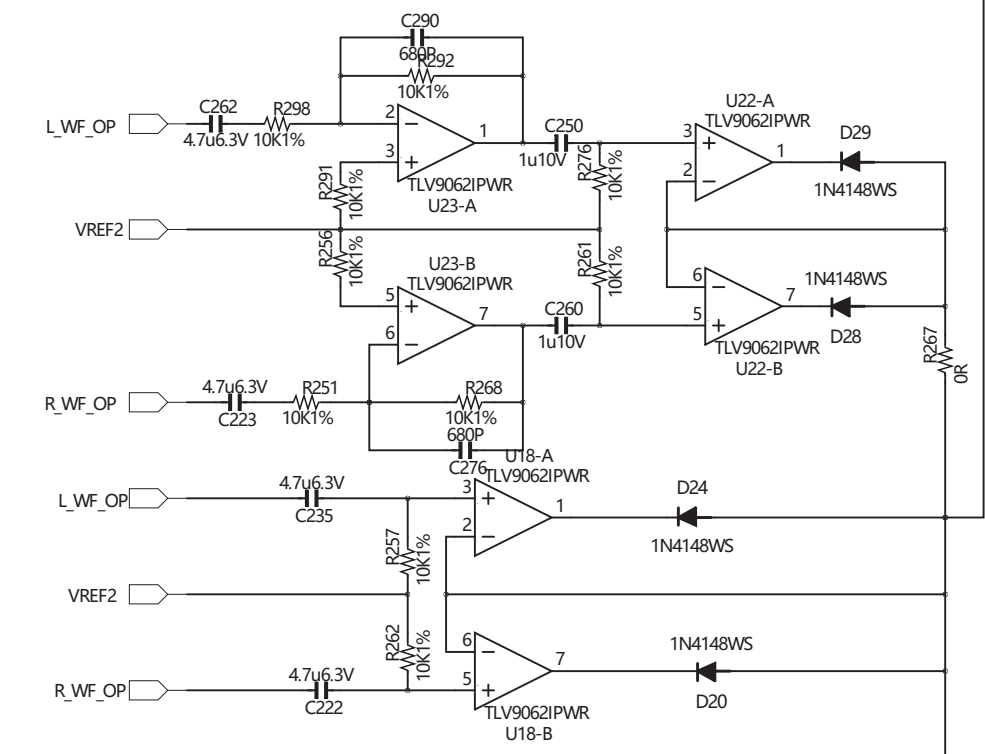
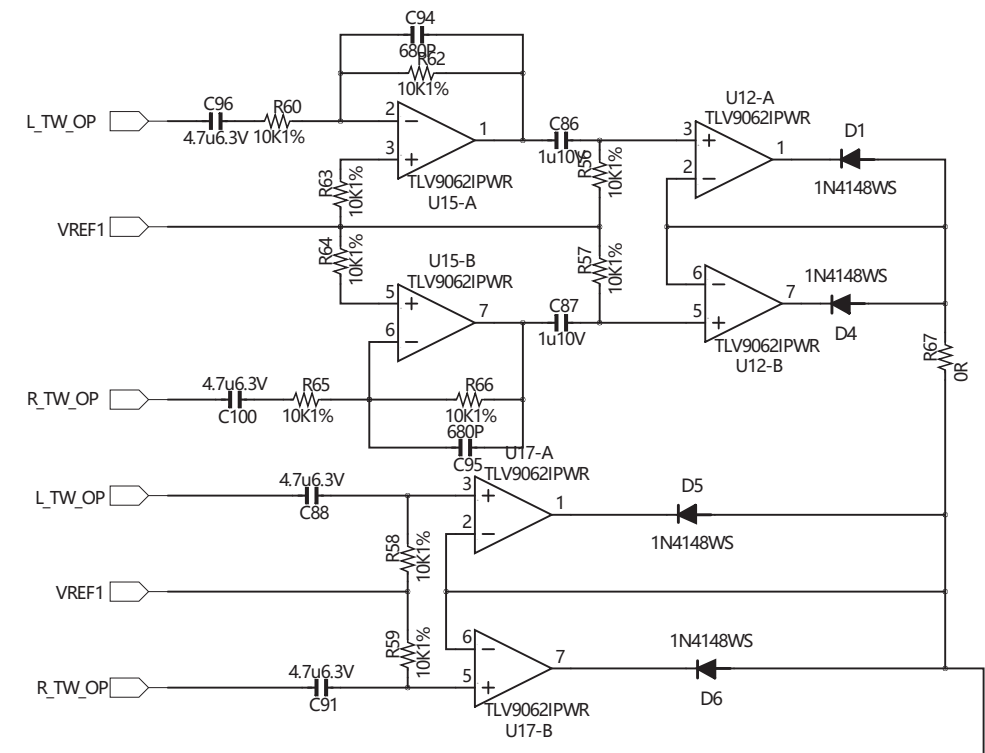
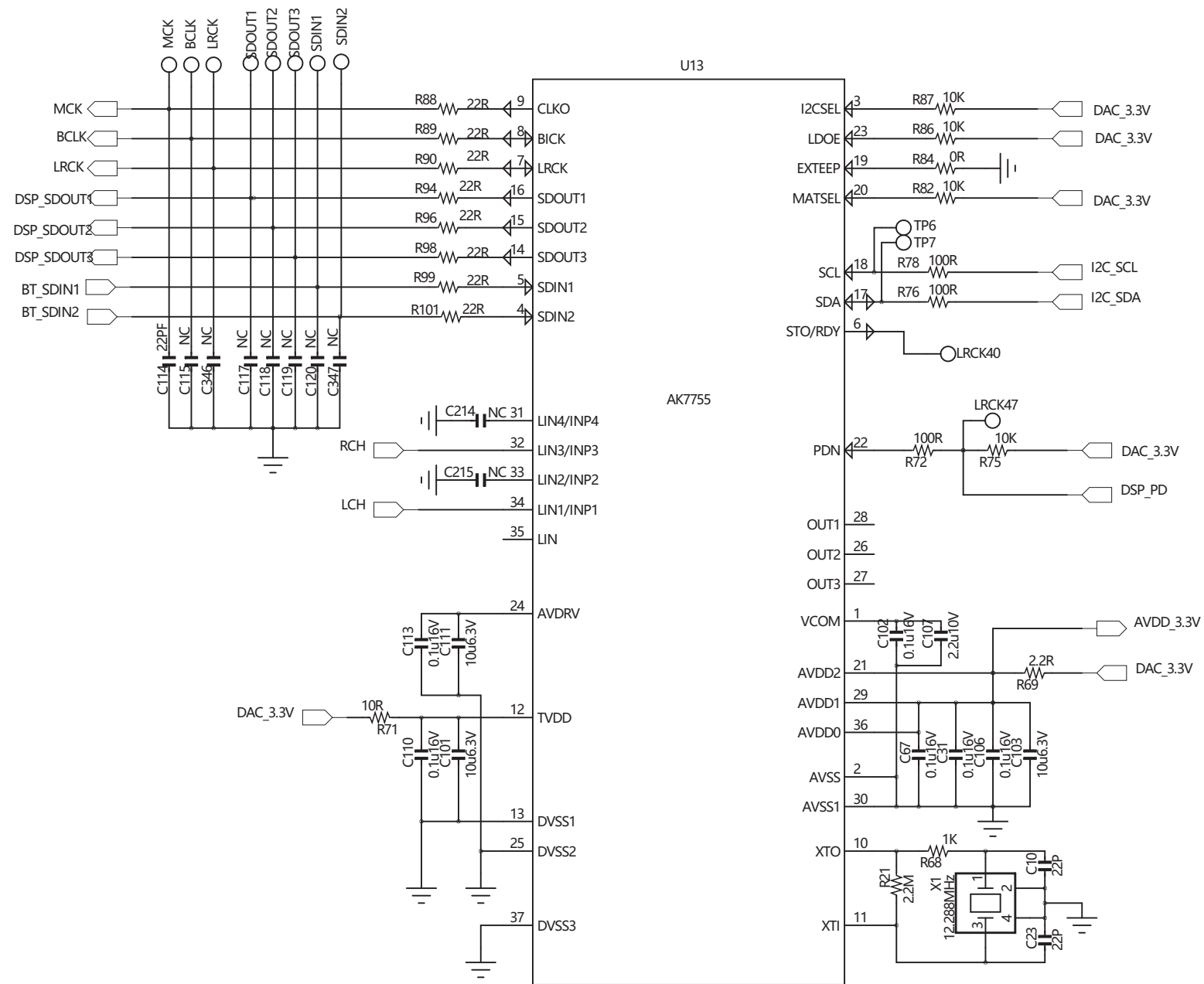


Xtreme3\_main board\_SCH

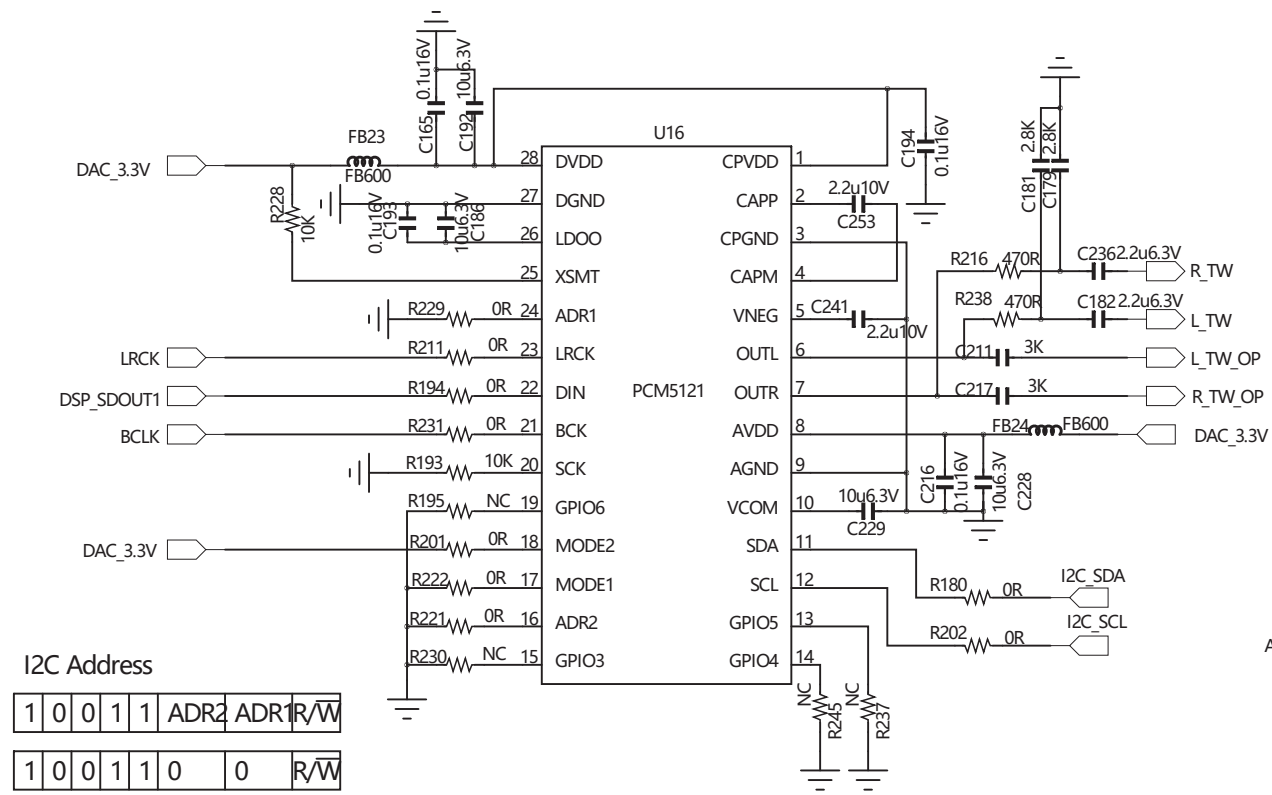






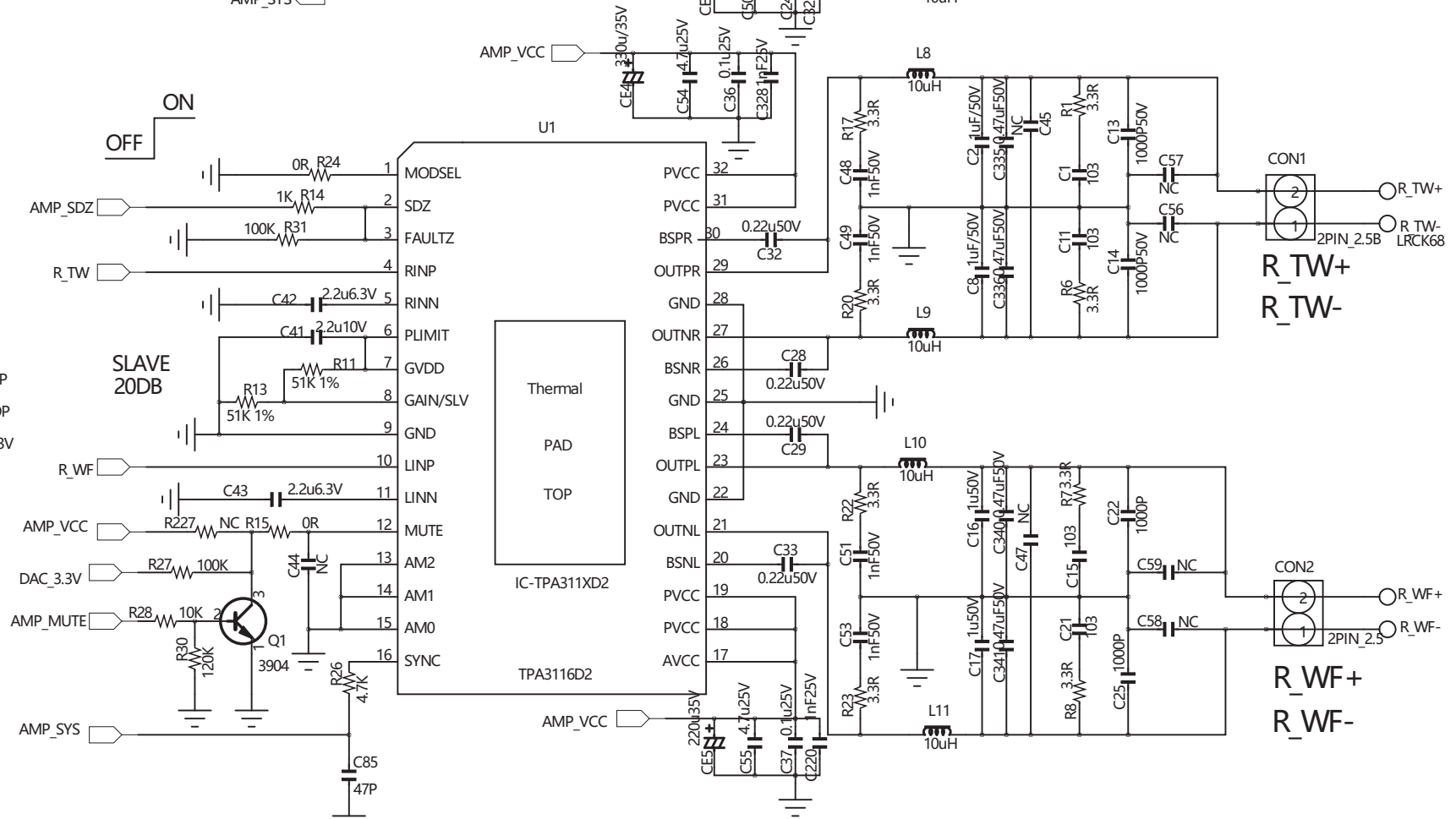
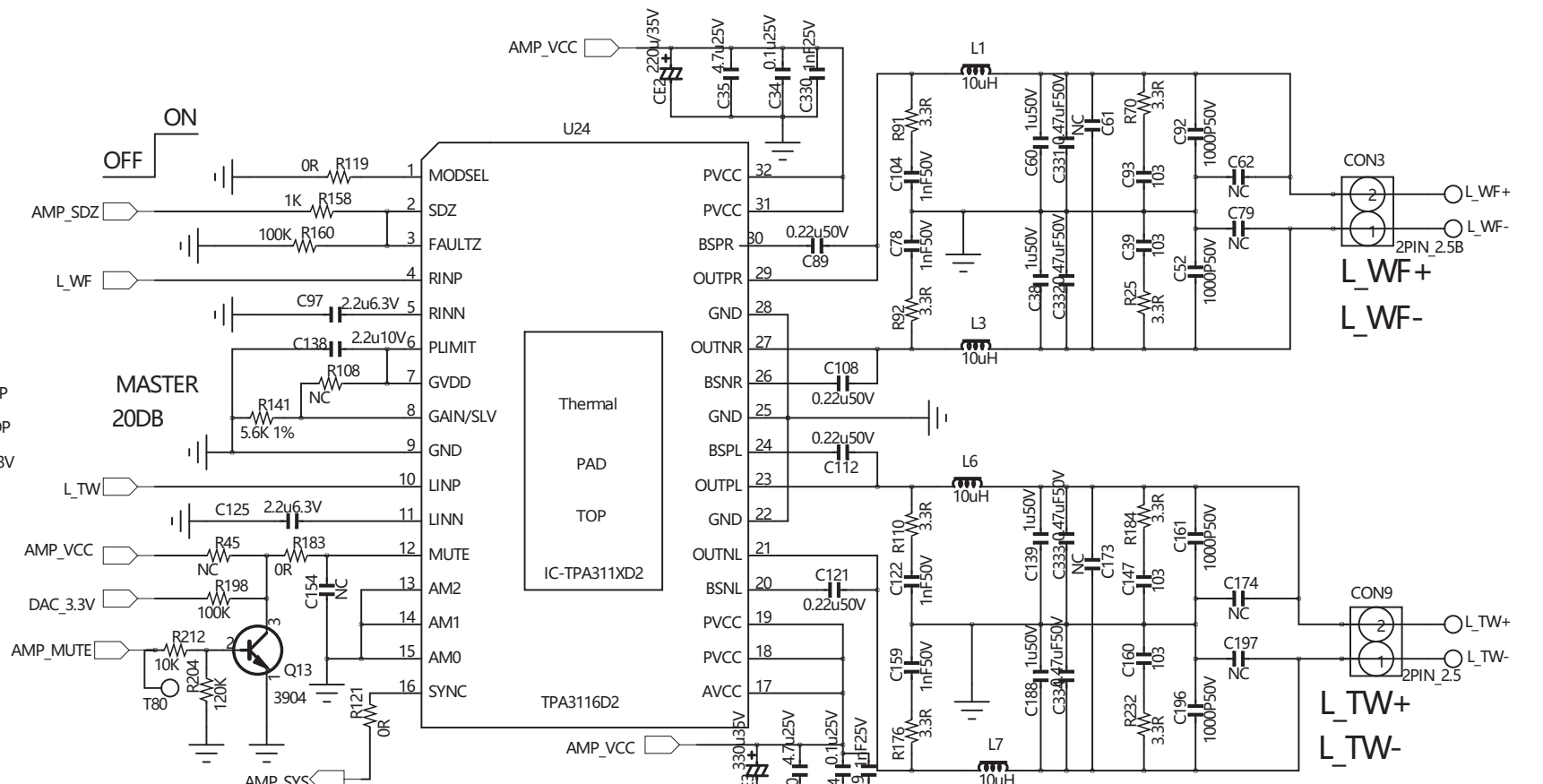
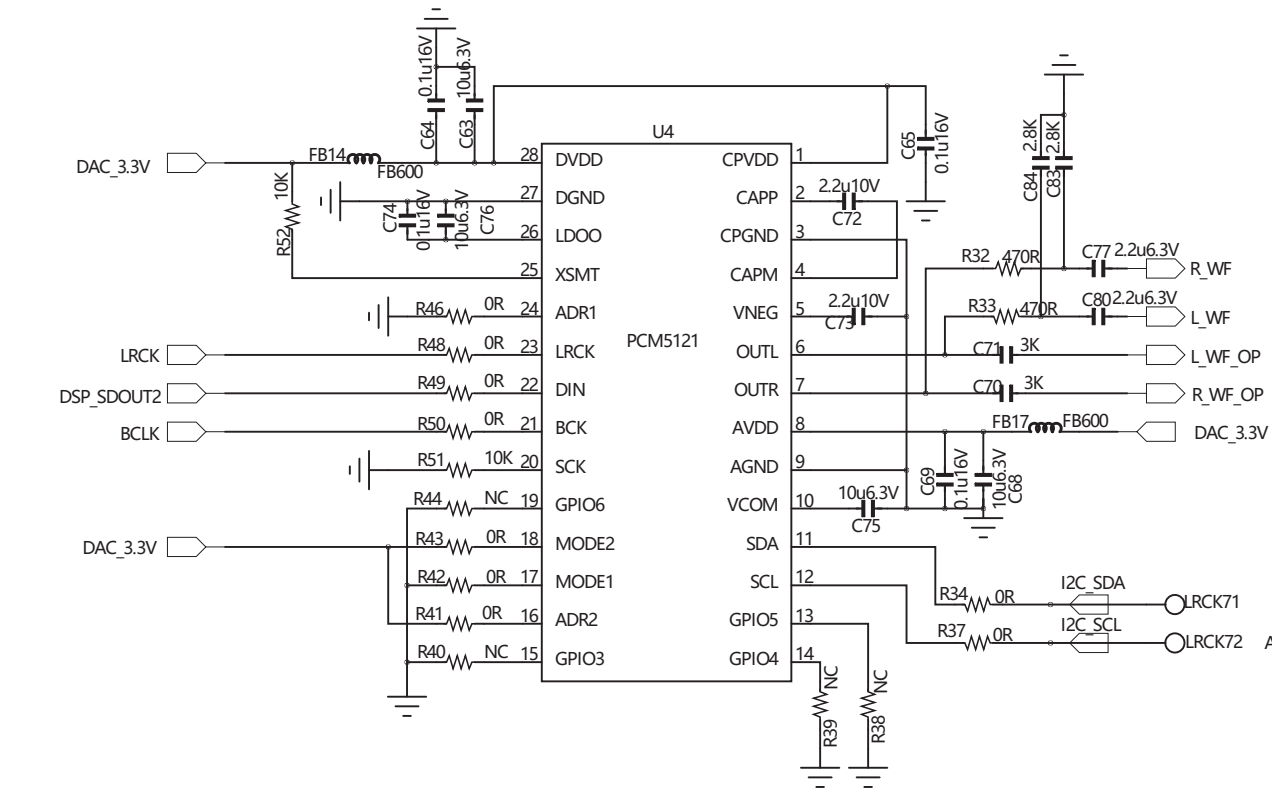


Xtreme3\_main board\_SCH



I2C Address

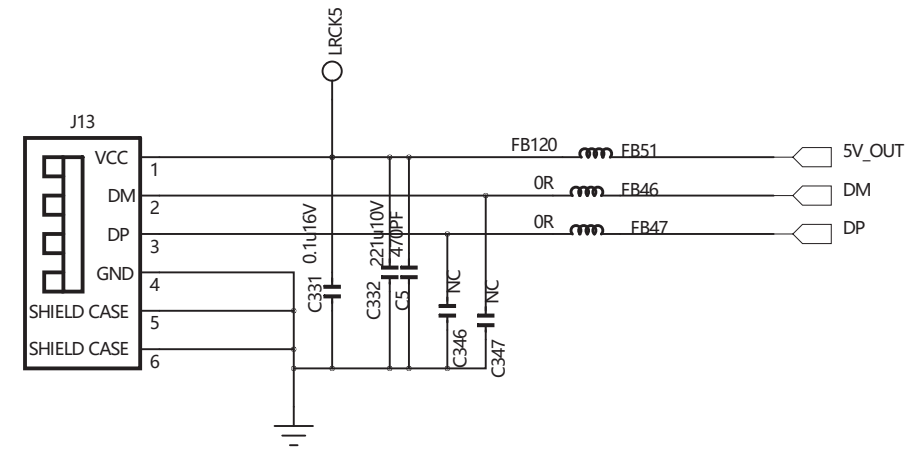
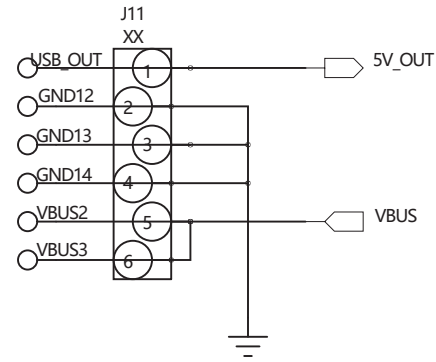
1	0	0	1	1	ADR2	ADR1	R/W
1	0	0	1	1	0	0	R/W
1	0	0	1	1	1	0	R/W



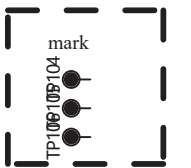
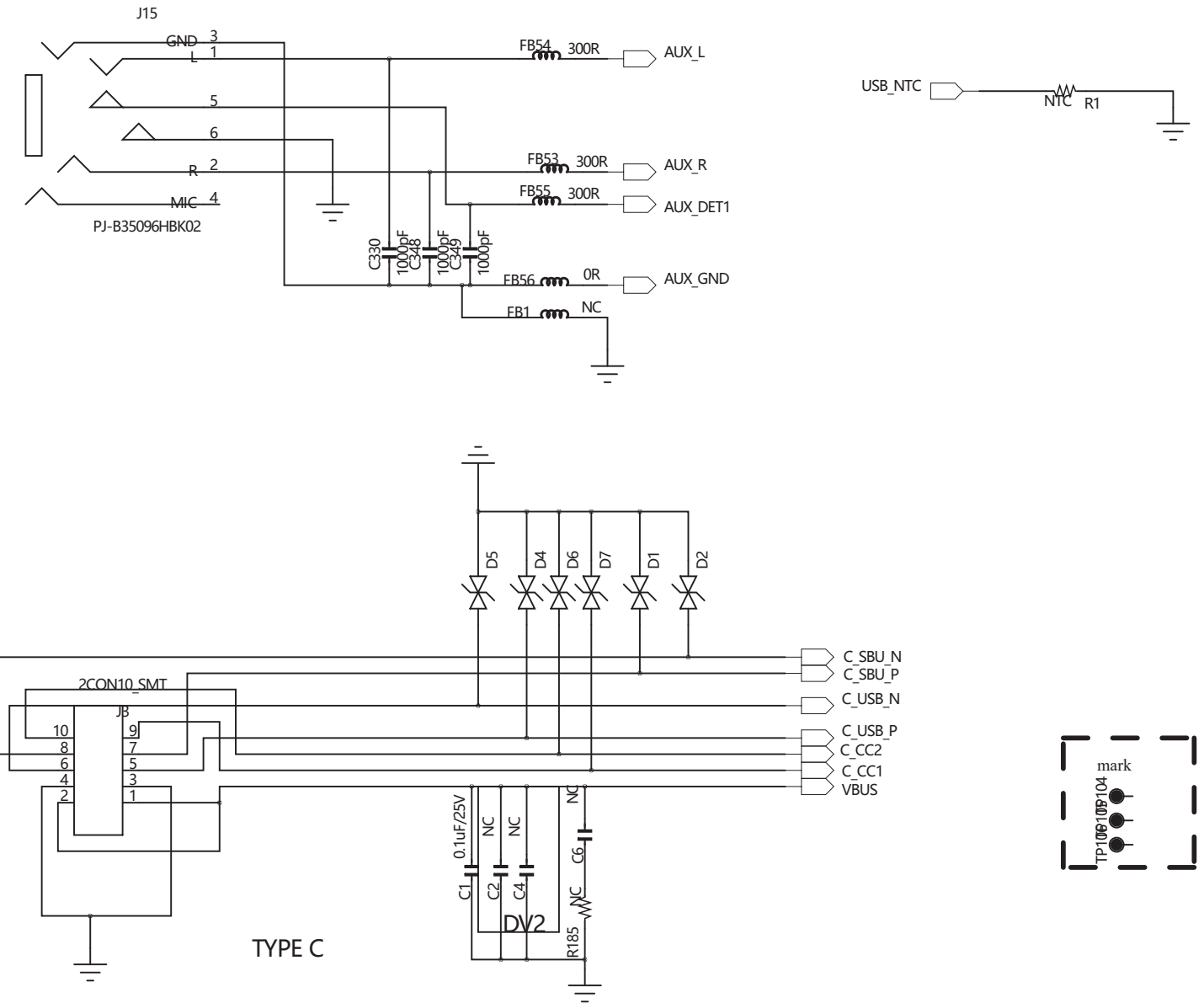
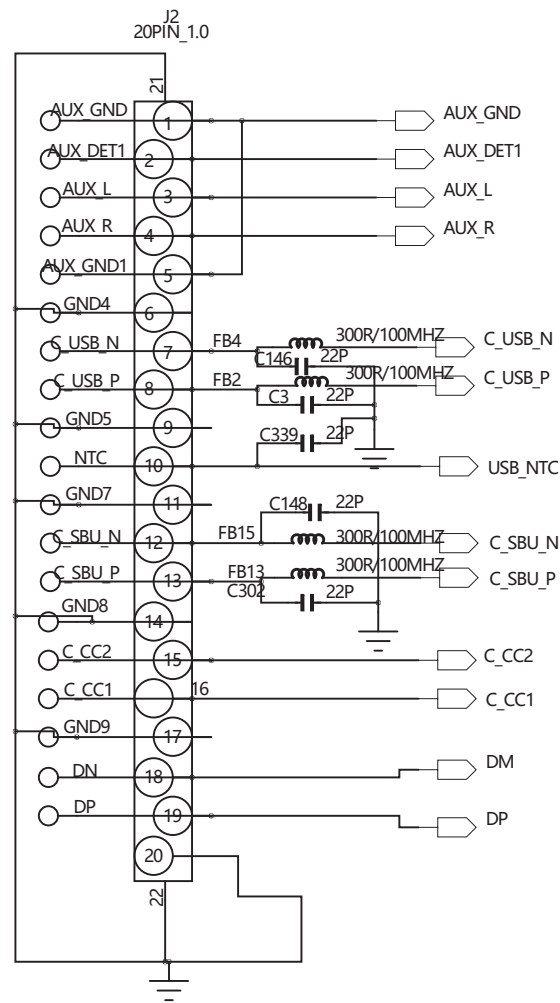
Change to 47P

# Xtreme3\_main board\_SCH

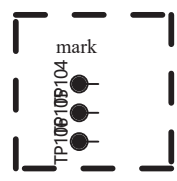
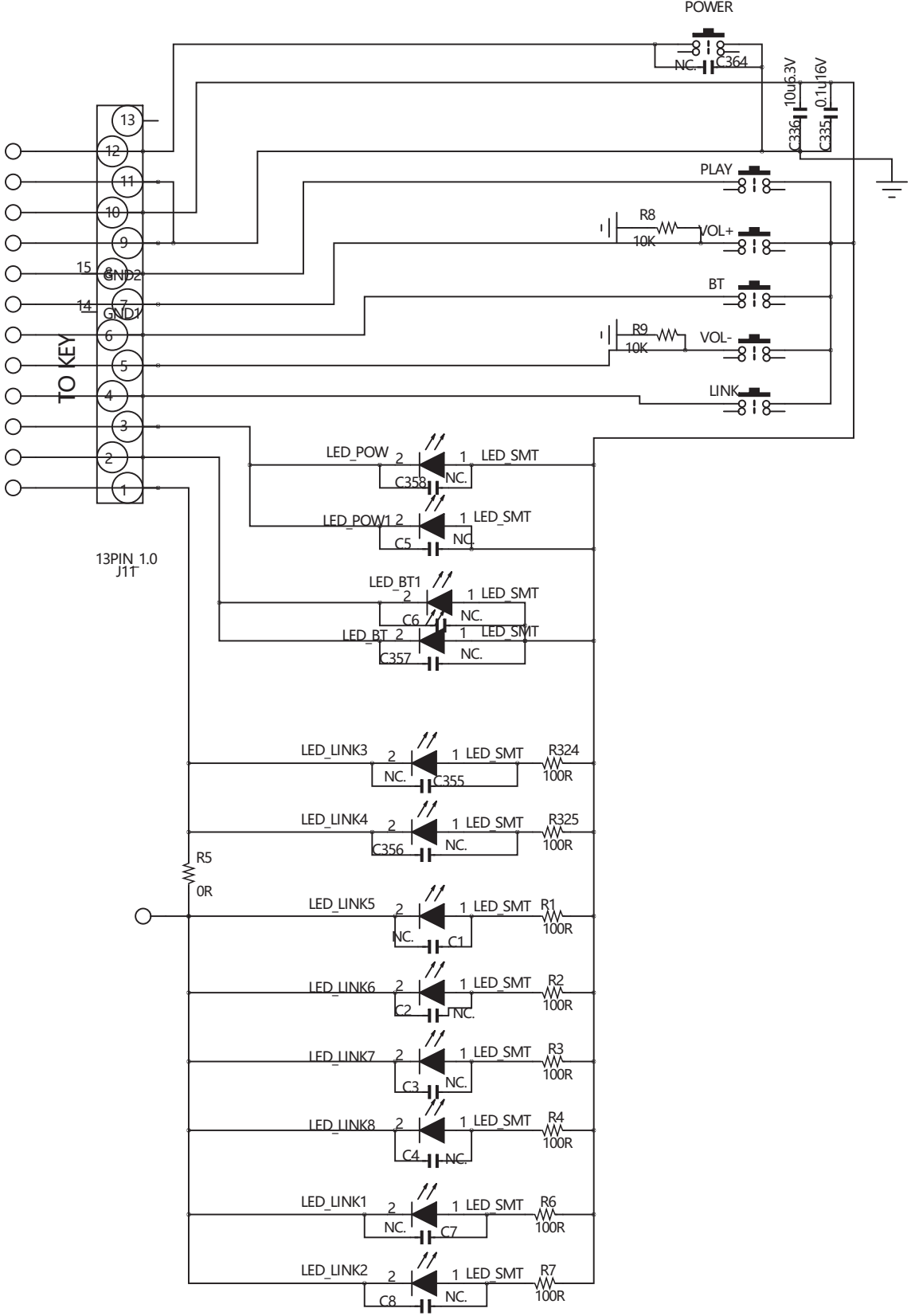
# Xtreme3\_jack board\_SCH



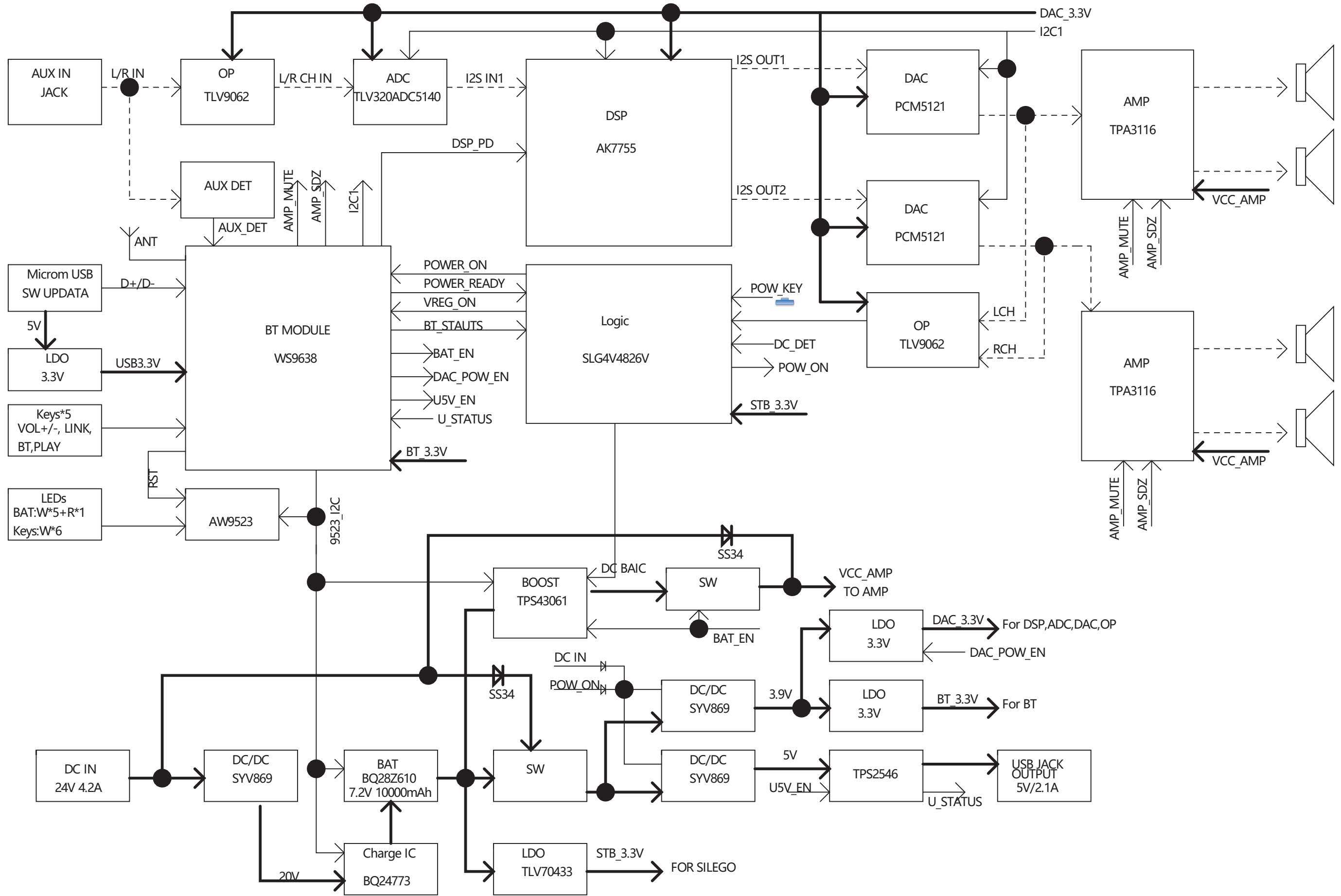
TO MAIN



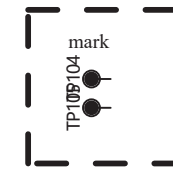
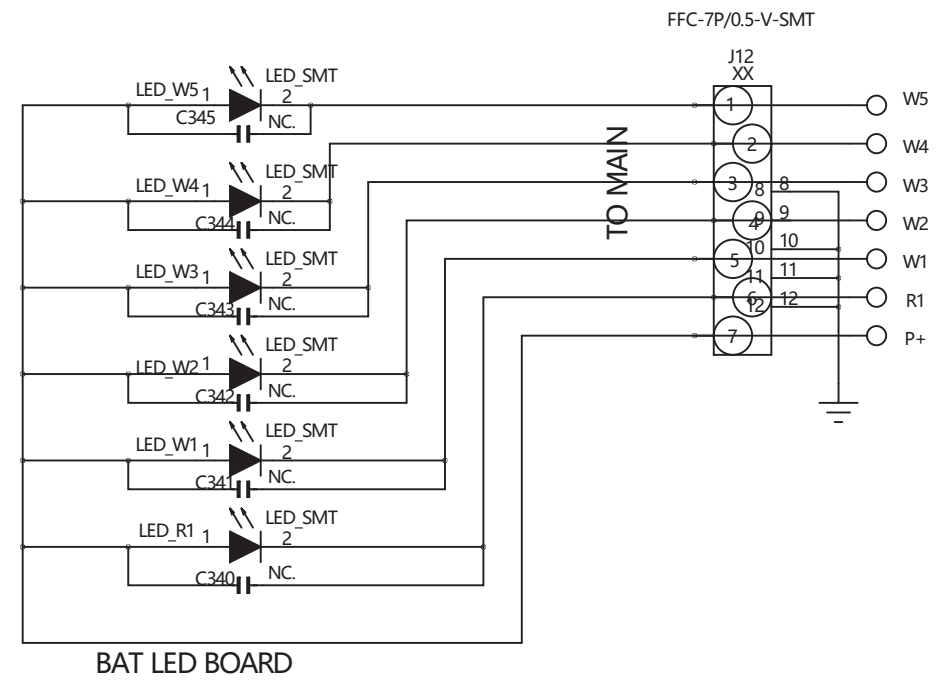
# Xtreme3\_key board\_SCH



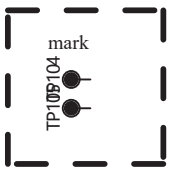
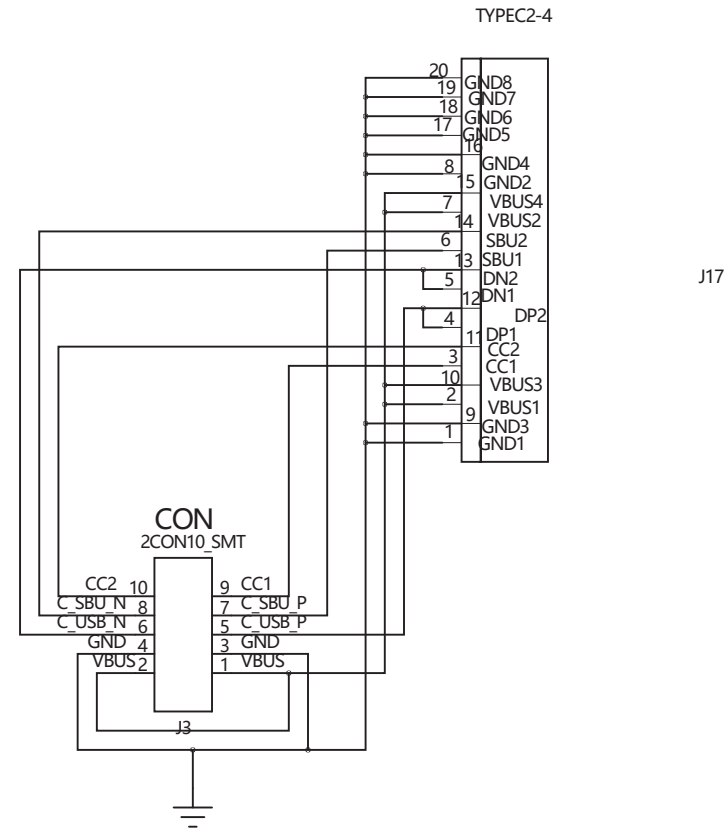
# Xtreme3\_LED board\_SCH



# Xtreme3\_LED board\_SCH



# Xtreme3\_type-c board\_SCH



# Xtreme3\_type-c\_SCH





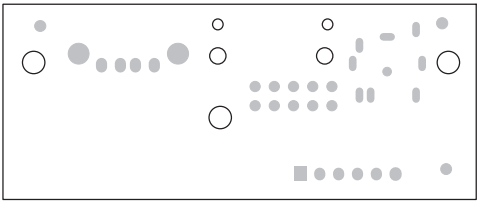
# Xtreme3\_main board\_Bottom\_Layout



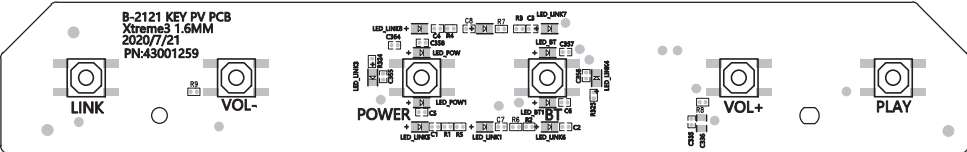
# Xtreme3\_main board\_Bottom\_Layout



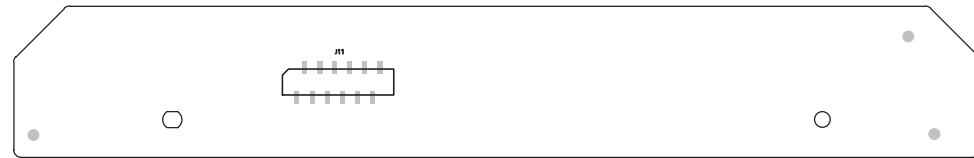
**Xtreme3\_jack board\_Bottom\_Layout**

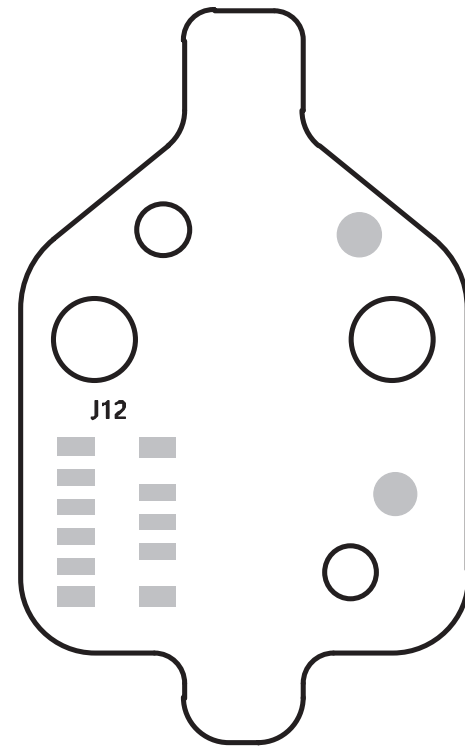


# Xtreme3\_key board\_TOP\_Layout

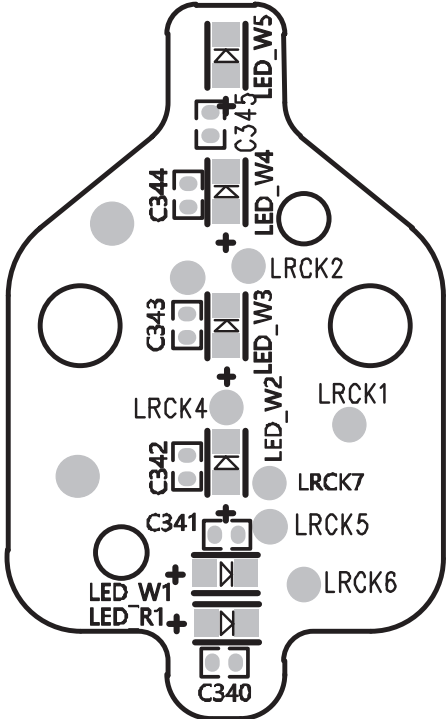


# Xtreme3\_key board\_Bottom\_Layout



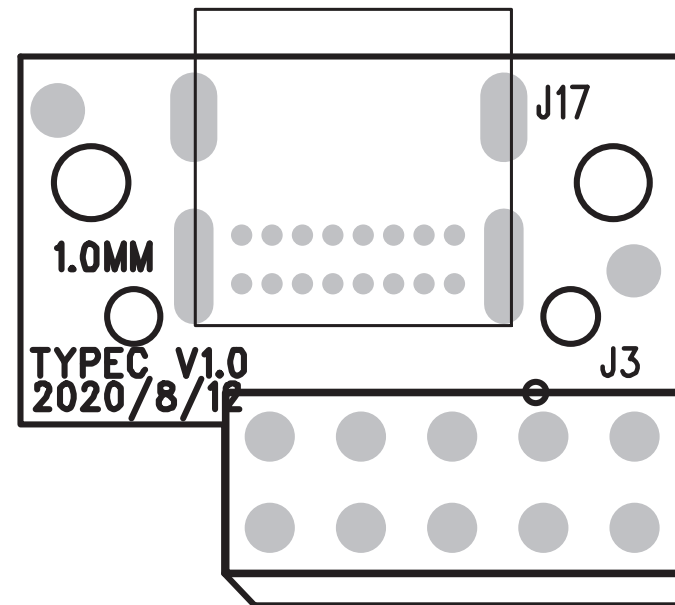


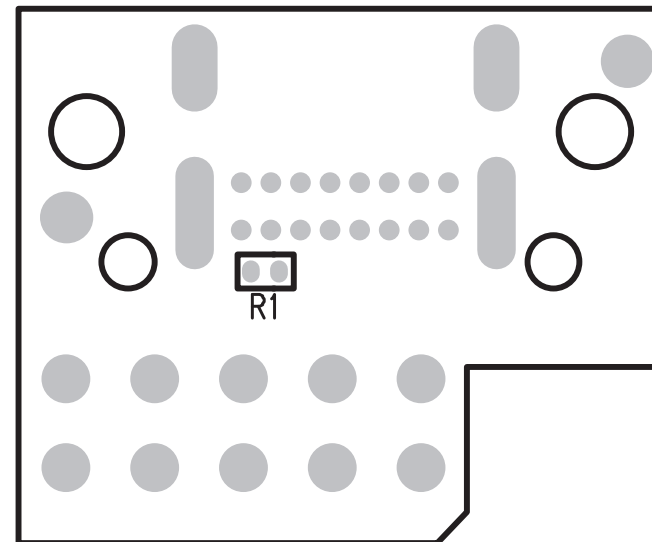
Xtreme3\_LED board\_Bottom\_Layout



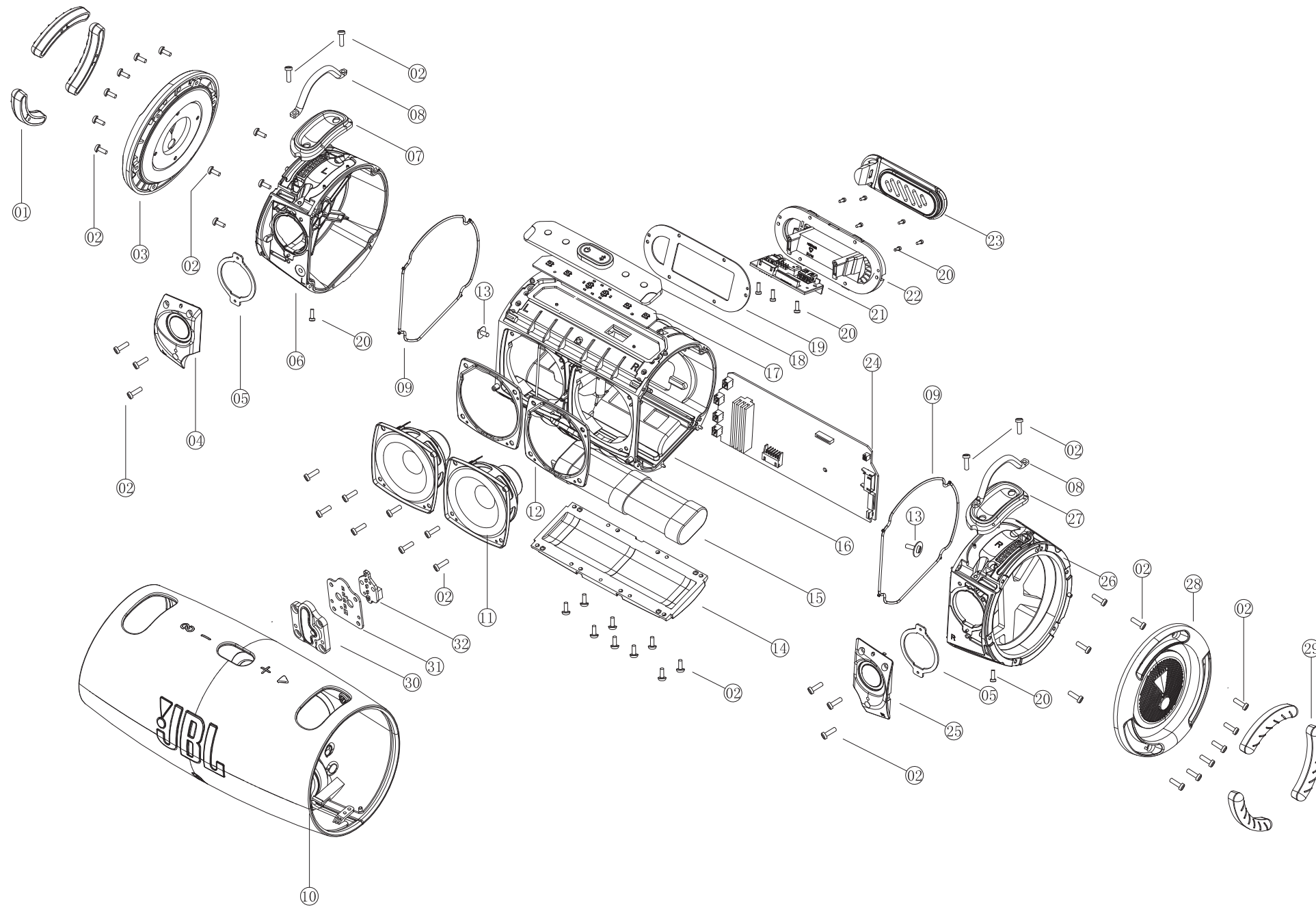


# Xtreme3\_type-c board\_TOP\_Layout





# MECHANICAL EXPLODED VIEW



Pos. No.	P/N	Description
1	45901690	RUBBER FOOT L XTREME3BLK
1	45901692	RUBBER FOOT L XTREME3BLU
1	45901693	RUBBER FOOT L XTREME3GRY
1	45901694	RUBBER FOOTL XTREME3SQUAD
3	81300178	PASSIVE RADIATOR ASSY L XTREME3BLK
3	81300180	PASSIVE RADIATOR ASSY L XTREME3BLU
3	81300182	PASSIVE RADIATOR ASSY L XTREME3GRY
3	81300184	PASSIVE RADIATOR ASSY L XTREME3SQUAD
6	31104268	PASSIVE RADIATOR BRACKET L XTREME3
10	32201483	GRILLE ASSY XTREME3BLK
10	32201484	GRILLE ASSY XTREME3BLUCN
10	32201518	GRILLE ASSY XTREME3BLU
10	32201519	GRILLE ASSY XTREME3GRY
10	32201520	GRILLE ASSY XTREME3SQUAD
11	81200713	WOOFER XTREME3
14	31104263	BATTERY COVER XTREME3
15	41700161	BATTERY XTREME3
16	31104270	ACOUSTIC CHAMBER XTREME3
17	31602457	KEY PCBA XTREME3
21	31602453	JACK PCBA XTREME3
22	31201186	I/O CONNECTOR BRACKET XTREME3BLK
22	31201187	I/O CONNECTOR BRACKET XTREME3BLU
22	31201188	I/O CONNECTOR BRACKET XTREME3GRY
22	31201189	I/O CONNECTOR BRACKET XTREME3SQUAD
23	45901688	I/O RUBBER CUSHION XTREME3BLK
23	45901698	I/O RUBBER CUSHION XTREME3BLU
23	45901699	I/O RUBBER CUSHION XTREME3GRY
23	45901700	I/O RUBBER CUSHION XTREME3SQUAD
24	31602450	MAIN PCBA XTREME3
25	81200714	TWEETER L XTREME3
25	81200715	TWEETER R XTREME3
26	31104269	PASSIVE RADIATOR BRACKET R XTREME3
28	81300177	PASSIVE RADIATOR ASSY R XTREME3BLK
28	81300179	PASSIVE RADIATOR ASSY R XTREME3BLU
28	81300181	PASSIVE RADIATOR ASSY R XTREME3GRY
28	81300183	PASSIVE RADIATOR ASSY R XTREME3SQUAD
29	45901691	RUBBER FOOT R XTREME3BLK
29	45901697	RUBBER FOOT R XTREME3BLU
29	45901696	RUBBER FOOT R XTREME3GRY
29	45901695	RUBBER FOOT R XTREME3SQUAD
30	31104265	BATTERY INDICATOR BRCKET XTREME3
32	31602454	LED LIGHT PCBA XTREME3

### JBL XTREME 3 ND SPARE PARTS LIST V1.3

Pos. No.	P/N	Description	UoM	Usage
1	45901690	RUBBER FOOT L XTREME3BLK ND	EA	3
1	45901692	RUBBER FOOT L XTREME3BLU ND	EA	3
1	45901693	RUBBER FOOT L XTREME3GRY ND	EA	3
1	45901694	RUBBER FOOTL XTREME3SQUAD ND	EA	3
3	81300178	PASSIVE RADIATOR ASSY L XTREME3BLK ND	EA	1
3	81300180	PASSIVE RADIATOR ASSY L XTREME3BLU ND	EA	1
3	81300182	PASSIVE RADIATOR ASSY L XTREME3GRY ND	EA	1
3	81300184	PASSIVE RADIATOR ASSY L XTREME3SQUAD ND	EA	1
6	31104268	PASSIVE RADIATOR BRACKET L XTREME3 ND	EA	1
10	32201483	GRILLE ASSY XTREME3BLK ND	EA	1
10	32201484	GRILLE ASSY XTREME3BLUCN ND	EA	1
10	32201518	GRILLE ASSY XTREME3BLU ND	EA	1
10	32201519	GRILLE ASSY XTREME3GRY ND	EA	1
10	32201520	GRILLE ASSY XTREME3SQUAD ND	EA	1
11	81200713	WOOFER XTREME3 ND	EA	2
14	31104263	BATTERY COVER XTREME3 ND	EA	1
15	41700161	BATTERY XTREME3 ND	EA	1
16	31104270	ACOUSTIC CHAMBER XTREME3 ND	EA	1
17	31602457	KEY PCBA XTREME3 ND	EA	1
21	31602453	JACK PCBA XTREME3 ND	EA	1
22	31201186	I/O CONNECTOR BRACKET XTREME3BLK ND	EA	1
22	31201187	I/O CONNECTOR BRACKET XTREME3BLU ND	EA	1
22	31201188	I/O CONNECTOR BRACKET XTREME3GRY ND	EA	1
22	31201189	I/O CONNECTOR BRACKET XTREME3SQUAD ND	EA	1
23	45901688	I/O RUBBER CUSHION XTREME3BLK ND	EA	1
23	45901698	I/O RUBBER CUSHION XTREME3BLU ND	EA	1
23	45901699	I/O RUBBER CUSHION XTREME3GRY ND	EA	1
23	45901700	I/O RUBBER CUSHION XTREME3SQUAD ND	EA	1
24	31602450	MAIN PCBA XTREME3 ND	EA	1
25	81200714	TWEETER L XTREME3 ND	EA	1
25	81200715	TWEETER R XTREME3 ND	EA	1
26	31104269	PASSIVE RADIATOR BRACKET R XTREME3 ND	EA	1
28	81300177	PASSIVE RADIATOR ASSY R XTREME3BLK ND	EA	1
28	81300179	PASSIVE RADIATOR ASSY R XTREME3BLU ND	EA	1
28	81300181	PASSIVE RADIATOR ASSY R XTREME3GRY ND	EA	1
28	81300183	PASSIVE RADIATOR ASSY R XTREME3SQUAD ND	EA	1
29	45901691	RUBBER FOOT R XTREME3BLK ND	EA	3
29	45901697	RUBBER FOOT R XTREME3BLU ND	EA	3
29	45901696	RUBBER FOOT R XTREME3GRY ND	EA	3
29	45901695	RUBBER FOOT R XTREME3SQUAD ND	EA	3
30	31104265	BATTERY INDICATOR BRACKET XTREME3 ND	EA	1
32	31602454	LED LIGHT PCBA XTREME3 ND	EA	1
	47102774	GIFT BOX XTREME3BLKAM ND	EA	1
	47102775	GIFT BOX XTREME3BLUAM ND	EA	1
	47102776	GIFT BOX XTREME3QUADAM ND	EA	1
	47102777	GIFT BOX XTREME3GRYAM ND	EA	1
	47102838	GIFT BOX XTREME3BLUCN ND	EA	1
	47102839	GIFT BOX XTREME3SQUADCN ND	EA	1

47102954	GIFT BOX XTREME3BLKEU ND	EA	1
47102955	GIFT BOX XTREME3BLUEU ND	EA	1
47102956	GIFT BOX XTREME3SQUADEU ND	EA	1
47103001	GIFT BOX XTREME3GRYEU ND	EA	1
47103002	GIFT BOX XTREME3BLKAS ND	EA	1
47103003	GIFT BOX XTREME3BLUAS ND	EA	1
47103004	GIFT BOX XTREME3SQUAD AS ND	EA	1
47103005	GIFT BOX XTREME3BLK CN ND	EA	1
47103006	GIFT BOX XTREME3BLU JN ND	EA	1
47103007	GIFT BOX XTREME3SQUAD JN ND	EA	1
47103008	GIFT BOX XTREME3BLK RU ND	EA	1
47103009	GIFT BOX XTREME3BLU RU ND	EA	1
47103010	GIFT BOX XTREME3SQUAD RU ND	EA	1
47103011	GIFT BOX XTREME3BLK IN ND	EA	1
47103012	GIFT BOX XTREME3BLU IN ND	EA	1
47103013	GIFT BOX XTREME3SQUAD IN ND	EA	1
47103014	GIFT BOX XTREME3BLK BR ND	EA	1
47103015	GIFT BOX XTREME3BLU BR ND	EA	1
47103016	GIFT BOX XTREME3SQUAD BR ND	EA	1
47103017	GIFT BOX XTREME3BLK JN ND	EA	1
42200333	ADAPTER XTREME3AM ND	EA	1
42200353	ADAPTER W/PLUG XTREME3 EU ND	EA	1
42200354	ADAPTER W/PLUG XTREME3 AS ND	EA	1
42200355	ADAPTER XTREME3 JN ND	EA	1
42200356	ADAPTER XTREME3 CN ND	EA	1
42200357	ADAPTER W/PLUG XTREME3 RU ND	EA	1
42200358	ADAPTER W/PLUG XTREME3 IN ND	EA	1
42200359	ADAPTER W/PLUG XTREME3 BR ND	EA	1
45400380	STRAP XTREME3 BLK/GRY ND	EA	1
45400381	STRAP XTREME3 BLU ND	EA	1
45400382	STRAP XTREME3 SQUAD ND	EA	1
42001273	WIRE L200MM 2P RED PLUG XTREME3 ND	EA	1
42001274	WIRE L130MM 2P BLU PLUG XTREME3 ND	EA	1
42001311	WIRE L250MM 2P BLK PLUG XTREME3 ND	EA	1
42001276	WIRE L190MM 2P WHT PLUG XTREME3 ND	EA	1
42001279	WIRE L160MM 6P XTREME3 ND	EA	1
42001278	FFC CABLE L70MM WHT 12P XTREME3 ND	EA	1
42001277	FFC CABLE L150MM WHT 7P XTREME3 ND	EA	1
42001280	FFC CABLE L140MM WHT 20P XTREME3 ND	EA	1
31602461	CONNECTOR PCBA XTREME3 ND	EA	1
41800027	PLUG FOR ADAPTOR XTREME3 ND UK	EA	1

September, 2018

# 3M™ Adhesion Promoter 111

## Product Description

3M™ Adhesion Promoter 111 is an isopropyl alcohol based solution used to promote better and faster adhesion of 3M™ VHB™ Tapes to various surfaces including bare metals, galvanized steel, and painted surfaces. Since surfaces and paint formulations vary considerably, each application should be verified through testing.

## Product Features

- Higher bond strength.
- Increased tape adhesion build rate at both normal and cooler temperatures.
- Isopropyl alcohol based solvent system.
- Non-offensive odor.
- Very quick drying.
- Can clean and promote adhesion in one step provided the surface is relatively clean and free of wax, grease, oil, and loose particles.



# 3M™ Adhesion Promoter 111

## Technical Information Note

The following technical information and data should be considered representative or typical only and should not be used for specification purposes.

## Typical Physical Properties

Property	Values		Notes
Color	Clear		
VOC	780 g/L		
Active Ingredients	<5 % by weight		
Flash Point	11 °C	52 °F	
Solvent	Isopropyl alcohol (IPA)		
Coverage	19 m <sup>2</sup> /L	800 sq ft/gal	Based on 0.002 in wet coating thickness. Can vary greatly depending on method of application.
Drying Time	1 min		Depending on coating thickness, temperature, and humidity.

## Available Sizes

250 ml bottle, 1 gallon can

# 3M™ Adhesion Promoter 111

## Handling/Application Information

### Application Techniques

Surface must be clean, dry, and free of wax, oil, grease and loose particles.

Substrate must be unified.

Contaminated surfaces must be cleaned with an appropriate cleaner and/or a 50/50 mixture of isopropyl alcohol and water.\*

Apply a thin, uniform coating to the bonding surface before application of 3M™ VHB™ Tape. Use the minimum amount that will fully coat the area to be taped.

Application may be done with a clean lint-free cloth, pad, felt tipped dauber, absorbent paper towel or disposable tissue. Brushes, rollers, or spraying tend to apply excessive amounts of 3M™ Adhesion Promoter 111 and should therefore be avoided.

Allow to dry completely prior to application of tape. Depending on temperature and humidity, the drying and reacting time of 3M adhesion promoter 111 can vary. Typical drying time will be 1-2 minutes. Forced, hot air drying of 3M adhesion promoter 111 is acceptable, but remember that 3M adhesion promoter 111 is flammable and must not be used near any open flames or ignition sources.

Apply tape within 8 hours, or reapply 3M adhesion promoter 111.

REPLACE CAP WHEN NOT IN USE. 3M adhesion promoter 111 is reactive with water including moisture (humidity) in air.

\*When using solvents, extinguish all ignition sources, including pilot lights, and follow the manufacturer's precautions and directions for use.

### Cleanup

3M™ Adhesion Promoter 111 can be removed from unwanted surfaces with straight isopropyl alcohol (IPA) or a blend of IPA and water. Rubbing Alcohol is typically 70% IPA and 30% water.\*

Excessive 3M adhesion promoter 111 may cause a dull white appearance on the surface. A small amount of chalking should not adversely affect the adhesive strength. If desired, for appearance purposes, the dull white chalking may be removed after tape application with either a clean dry cloth or a clean cloth that is slightly wet with isopropyl alcohol. Before tape application, the dull white chalking may be removed with a clean cloth that is only slightly wet with more 3M adhesion promoter 111.

\*When using solvents, extinguish all ignition sources, including pilot lights, and follow the manufacturer's precautions and directions for use.

### Storage and Shelf Life

3M adhesion promoter 111 will tolerate storage and shipment temperatures from -40°C (-40°F) to 66°C (150°F), but needs to be at a minimum of 10°C (50°F) when applied. Do not store in plastic container for more than 8 hours.

Many plastics do not provide an adequate vapor barrier to prevent loss of liquid.

When stored under proper conditions, product retains its performance and properties for 18 months from date of manufacture. Once opened, it is best to use within one month. Shelf life may be decreased, especially if open or poorly resealed container is continuously exposed to hot or humid environments. Properly dispose of any 3M adhesion promoter 111 that is either cloudy or has white precipitate on the bottom of the container.



# 3M™ Adhesion Promoter 111

## References

1. 3m.com Product Page

Url: [http://www.3m.com/3M/en\\_US/company-us/all-3m-products/~//3M-Adhesion-Promoter-111?N=5002385+3292992808&rt=rud](http://www.3m.com/3M/en_US/company-us/all-3m-products/~//3M-Adhesion-Promoter-111?N=5002385+3292992808&rt=rud)

2. Safety Data Sheet

Url: [https://www.3m.com/3M/en\\_US/company-us/SDS-search/results/?gsaAction=msdsSRA&msdsLocale=en\\_US&co=ptn&q=111](https://www.3m.com/3M/en_US/company-us/SDS-search/results/?gsaAction=msdsSRA&msdsLocale=en_US&co=ptn&q=111)

## ISO Statement

This Industrial Adhesives and Tapes Division product was manufactured under a 3M quality system registered to ISO 9001 standards.

## Technical Information

The technical information, guidance, and other statements contained in this document or otherwise provided by 3M are based upon records, tests, or experience that 3M believes to be reliable, but the accuracy, completeness, and representative nature of such information is not guaranteed. Such information is intended for people with knowledge and technical skills sufficient to assess and apply their own informed judgment to the information. No license under any 3M or third party intellectual property rights is granted or implied with this information.

## Product Selection and Use

Many factors beyond 3M's control and uniquely within user's knowledge and control can affect the use and performance of a 3M product in a particular application. As a result, customer is solely responsible for evaluating the product and determining whether it is appropriate and suitable for customer's application, including conducting a workplace hazard assessment and reviewing all applicable regulations and standards (e.g., OSHA, ANSI, etc.). Failure to properly evaluate, select, and use a 3M product and appropriate safety products, or to meet all applicable safety regulations, may result in injury, sickness, death, and/or harm to property.

# 3M™ Adhesion Promoter 111

## Warranty, Limited Remedy, and Disclaimer

Unless a different warranty is specifically stated on the applicable 3M product packaging or product literature (in which case such warranty governs), 3M warrants that each 3M product meets the applicable 3M product specification at the time 3M ships the product. 3M MAKES NO OTHER WARRANTIES OR CONDITIONS, EXPRESS OR IMPLIED, INCLUDING, BUT NOT LIMITED TO, ANY IMPLIED WARRANTY OR CONDITION OF MERCHANTABILITY, FITNESS FOR A PARTICULAR PURPOSE, OR ARISING OUT OF A COURSE OF DEALING, CUSTOM, OR USAGE OF TRADE. If a 3M product does not conform to this warranty, then the sole and exclusive remedy is, at 3M's option, replacement of the 3M product or refund of the purchase price.

## Limitation of Liability

Except for the limited remedy stated above, and except to the extent prohibited by law, 3M will not be liable for any loss or damage arising from or related to the 3M product, whether direct, indirect, special, incidental, or consequential (including, but not limited to, lost profits or business opportunity), regardless of the legal or equitable theory asserted, including, but not limited to, warranty, contract, negligence, or strict liability.



Industrial Adhesives and Tapes  
Division  
3M Center  
St. Paul, MN 55144-1000  
800-362-3550  
[www.3M.com](http://www.3M.com)

Please recycle.  
© 3M 2019. All Rights  
Reserved.

The brands listed above are trademarks of  
3M

## Revision List

### Version 1.0

\* Initial release. Aug. 2020

### Version 1.1

\* Add UK Plug for EU Adapter, update 5 existing Adapter descriptions to add Plug to form one set. Oct. 2020

### Version 1.2

\* Correct P/N from 42200353 to 42200354 for the part ADAPTER W/PLUG XTREME3 AS ND. Nov. 2020

### Version 1.3

\* Add Side Bumper (rubber foot) assembly Instructions and specifications for treating agent - 3M Adhesive Promoter 111 specifications. Feb. 2021